

2.92mm Between-Series Adapters

Models 8723A/B/C/D and 8725A/B

Description

The precision adapters in these model series are designed to allow devices with 2.92mm connectors to mate with devices and cables bearing 7mm or Type N connectors. When properly mated, they provide a low VSWR connection with low insertion loss and high repeatability. Made of highly durable materials, these adapters are ideal for use in laboratory and production environments where frequent connect/disconnect cycles occur.

The 8725A and 8725B adapters are phase matched to each other so that they may be easily interchanged for network analyzer measurement of non-insertable devices.

Connector Description – 2.92mm (K)

The K connectors on 8719A/B adapters are precision miniature 2.92mm air-interface connectors that are rated for operation from DC to 40 GHz. They have a mechanically compatible interface that mates with SMA and 3.5mm connectors. The K connector was originally introduced by Maury in 1974 as the MPC3 connector and re-introduced by Wiltron in 1984 as the K connector. They comply with IEEE standard 287 general precision connector, instrument grade (GPC2.92).

Type N Connector Description

The precision type N connectors on these adapters are miniature, instrument grade, air-interface connectors that are rated for operation from DC to 18 GHz. They comply with IEEE standard 287 for instrument grade general precision connectors (GPC Type N). The connectors are normally made with stainless steel bodies with heat treated gold-plated beryllium copper contacts.

7mm Connector Description

Maury precision 7mm connectors are miniature, instrument grade, air-interface connectors rated for operation from DC to 18 GHz. They comply with IEEE standard 287 for instrument grade general precision connectors (GPC7). They are normally made with gold-plated beryllium copper bodies and have a six-slot heat treated gold-plated beryllium copper center conductor contact for improved repeatability and durability. See Maury data sheet 5E-060 for interface dimensions.

8723A

8723B



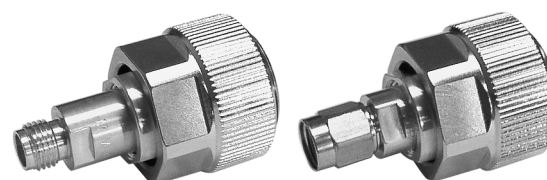
8723C

8723D



8725A

8725B



Available Models

MODEL	ADAPTS		FREQUENCY RANGE (GHz) AND MAXIMUM VSWR	NOMINAL IMPEDANCE	INSERTION LENGTH	
	SIDE A	SIDE B			INCHES	(CM)
8723A	2.92mm female ¹	Type N female ³	DC — 4.0 ≤ 1.07	50 ohm	1.614	(4.099)
8723B	2.92mm female ¹	Type N male ³				
8723C	2.92mm male ¹	Type N female ³	4.0 — 12.0 ≤ 1.10	50 ohm	1.914	(5.014)
8723D	2.92mm male ¹	Type N male ³				
8725A	2.92mm female ¹	7mm ⁴	12.0 — 18.0 ≤ 1.15	50 ohm	1.614	(4.099)
8725B	2.92mm male ¹	7mm ⁴				
			DC — 4.0 ≤ 1.05	50 ohm	1.67	(4.24)
			4.0 — 12.0 ≤ 1.07	50 ohm	1.67	(4.24)
			12.0 — 18.0 ≤ 1.10	50 ohm	1.67	(4.24)

¹ Precision 2.92mm per Maury data sheet 5E-063.

³ Precision type N per Maury data sheet 5E-049.

² MPC8 is mating compatible with SSMA connectors.

⁴ Precision 7mm per Maury data sheet 5E-060.

Key Literature: Maury data sheet 2B-042, 2B-043.