

WAVEGUIDE TO COAXIAL ADAPTERS

3.5mm RIGHT ANGLE LAUNCH

Features

- Low VSWR
1.05 Maximum Full Band Units Available, See Chart, Page 2
- Precision 3.5mm Connectors
- Precision Flanges



Description

The Maury 200 series adapters are right angle launch waveguide to 3.5mm precision coaxial connector adapters. These adapters cover the frequency range from 1.7 to 34 GHz in standard waveguide bands. Models are also available in double ridged waveguide (see chart below).

Those units covering 4.9 to 26.5 GHz (WR159, WR112, WR90, WR75, WR62, WR51, and WR42) have been improved and now feature a maximum VSWR of 1.05!

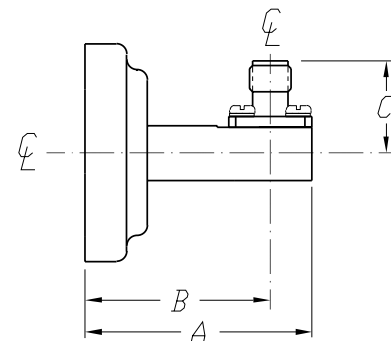
All adapters in this series are fitted with Maury precision flanges. These flanges feature precision indexing holes for precise alignment of the flanges and improved connection repeatability.

Maury also manufactures end launch and test port adapters (see data sheets 3A-230 and 3A-230A). Please contact the factory for applications assistance if the adapter you need is not listed or should you require a lower VSWR option.

Specifications

Frequency Range	1.7 to 34 GHz (see chart, page 2)
VSWR	See chart, page 2
Insertion Loss	0.15 dB maximum (typical)
Coaxial Connector	Precision 3.5mm per 5E-062
Waveguide Flange	See chart, page 2
Size and Weight	See chart, page 2

Dimensions





Chart

Model		Frequency Range (GHz)	Maximum VSWR [1]	Waveguide Size (EIA)	Equivalent Flange [2]	Dimensions (inches)				Approximate Net Weight (ounces)
Female	Male					A	B	C		
								Female	Male	
R200A1	R200B1	1.7 — 2.6	1.10	WR430	CPR430F	4.13	2.74	2.53	2.57	32
S200A1	S200B1	2.60 — 3.95	1.10	WR284	UG584/U	3.00	2.00	2.13	2.17	22
E200A1	E200B1	3.60 — 4.90	1.10	WR229	CPR229F	2.40	1.63	2.03	2.07	8
G200A1	G200B1	3.95 — 5.85	1.10	WR187	UG149/U	2.25	1.63	1.90	1.94	8-1/2
F200A2	F200B2	4.90 — 7.05	1.05	WR159	CPR159F	2.14	1.41	1.86	1.90	7
C200A1	C200B1	5.85 — 8.20	1.10	WR137	UG344/U	2.16	1.50	1.77	1.81	6
H200A2	H200B2	7.05 — 10.0	1.05	WR112	UG51/U	2.13	1.63	1.71	1.75	4
X200A2	X200B2	8.20 — 12.4	1.05	WR90	UG39/U	1.63	1.18	0.65	0.69	2
M200A2	M200B2	10.0 — 15.0	1.05	WR75	MPF75	1.50	1.05	0.63	0.67	1-1/2
P200A2	P200B2	12.4 — 18.0	1.05	WR62	UG419/U	1.38	0.97	0.59	0.63	1
N200A2	N200B2	15.0 — 22.0	1.05	WR51	MPF51	1.38	1.00	0.56	0.60	1
K200A2	K200B2	18.0 — 26.5	1.05	WR42	UG595/U	1.13	0.75	0.76	0.80	1
Q200A3	Q200B3	22.0 — 33.0	1.20	WR34	UG1530/U	1.20	1.03	0.78	0.82	1
U200A1	U200B1	26.5 — 34.0	1.10	WR28	UG599/U	1.35	1.00	0.67	0.71	1
DC200A	DC200B	3.5 — 8.2	1.30	WRD350D24	MDF350	2.00	1.56	1.80	1.84	5
DF200A	DF200B	6.5 — 18.0	1.30	WRD650D24	MDF650	1.50	1.16	0.78	0.82	3
DA200A	DA200B	7.5 — 18.0	1.25	WRD750D24	MDF750	1.50	1.23	0.60	0.64	3
DE200A	DE200B	18.0 — 34.0	1.30	WRD180C24	MDF180	1.25	0.96	0.66	0.70	2

[1] Lower VSWR option may be available. Please contact the factory.

[2] Flanges are provided with precision indexing holes. Interface information will be provided upon request.