



Maury Microwave

1.85/2.4mm Digital Connector Gage Kit Metrology Grade

Model A048A



User Guide

1.85/2.4mm Digital Connector Gage Kit

Model A048A



Maury Microwave

2900 Inland Empire Boulevard
Ontario, California 91764-4804 USA
Phone: (909) 987-4715
Facsimile: (909) 987-1112

maurymw.com

048-10 (Rev D) 07/20
Copyright © 2020 Maury Microwave Corporation. All rights reserved.

Warranty

Maury Microwave hardware products are warranted against defects in materials and workmanship for a period of one year from date of shipment. During the warranty period, Maury Microwave will, at its option, either repair or replace products which prove to be defective.

Maury Microwave software products are warranted against defects in material and workmanship of the media on which the product is supplied for a period of ninety (90) days from date of shipment. Maury also warrants that the product shall operate substantially in accordance with published specifications during the same warranty period. During the warranty period, Maury Microwave will, at its option, either repair or replace products which prove to be defective. Maury does not warrant that the operation of the product shall be uninterrupted or error-free.

For warranty service or repair, all products must be returned to Maury Microwave and must be issued a return authorization number by Maury prior to shipment. Buyer shall prepay shipping charges to Maury. Obligation is limited to the original Buyer.

Limitation of Warranty

The foregoing warranty shall not apply to defects resulting from improper or inadequate maintenance by the Buyer, unauthorized modification or misuse, operation outside of the environmental specifications for the product, or wear resulting from normal use. No other warranty is expressed or implied. Maury Microwave specifically disclaims the implied warranties of merchantability and fitness for a particular purpose.

The remedies provided herein are the Buyer's sole and exclusive remedies. Maury Microwave shall not be liable for any direct, indirect, special, incidental, or consequential damages whatsoever (including, without limitation, damages for loss of business profits, business interruption, loss of business information, or any other financial loss) arising out of the Buyer's use of or inability to use the product, even if Maury or an authorized Maury dealer has been advised of the possibility of such damages.

Contents

General Information 1
 Gage Kit Description 1

Operation 4
 Cleaning 9
 Error Messages 9
 Gaging Precision 1.85 and 2.4mm Connectors 10
 Gaging Sliding Loads 12
 Gaging 1.85 and 2.4mm Air Lines 14
 Maintenance 16
 Calibration 16

Appendix 19
 Data Sheet Resources 19

Contacts 21

General Information

Gage Kit Description

The Maury model A048A connector gage kit is designed to measure 1.85/2.4mm connectors with either female or male interfaces. The digital indicators used in the A048A connector gage kit provide a measurement resolution of .0001" when used in the inch mode or .001mm (0.000040 inches) when used in the metric mode. For simplicity, the rest of this manual will refer to measuring in inches. However, the principles presented apply equally when used in metric mode. The Maury A048A connector gage kit achieves excellent repeatability by maintaining tightly controlled tolerances on all machined parts. To achieve maximum accuracy, Maury recommends that an average of 3 measurements taken at different gage orientations be used to minimize random errors. See **Figure 1**.

The Maury model A048A1 measures female connectors and A048A2 measures male connectors. These gage assemblies use a "thread-on" design that simulates actual mating conditions, allowing high accuracy measurements and hands-free operation. The connector gage assemblies are initially set to zero using master setting gages, A048A3 (female) or A048A4 (male), permitting measurements to be read directly on the digital indicator. Centering sleeves are provided for measuring beadless air lines and mismatch air lines. Flush setting sliding loads is easily accomplished using the A048A. The thread-on design of the A048A also allows more convenient and accurate measurements of network analyzer test ports.

Maury models A048A1 and A048A2 connector gages are compatible with Mitutoyo SPC Digimatic readouts for external display of data. Use Maury model A048B1 & A048B2 data cables. See **Figure 2**. All machined parts are made from heat treated stainless steel to assure long life and excellent stability. Gaging surfaces are lapped to ensure a high degree of accuracy. A parts list is shown in **Table 1**.

Item	Description	Maury Part Number	Quantity Per Assy.	Notes
1	Indicator Assembly, Female	A048A1	1	—
2	Indicator Assembly, Male	A048A2	1	—
3	Master Gage, Female	A048A3	1	—
4	Master Gage, Male	A048A4	1	—
5	Sleeve Set (2), 2.4mm	A035S4	1	*
6	Sleeve Set (2), 1.85mm	A048S2	1	*
6	Torque Wrench, 5/16	8799A1	1	8 in/lbs
7	Open End Wrench, 5/16	A048S1	1	—
8	Battery	SR44**	(1)	Commercial
9	Data Cable (40 inch)	A048B1	(1)	(Optional)
10	Data Cable (80 inch)	A048B2	(1)	(Optional)

* The centering sleeves are shipped in small plastic containers

** 20,000 hour life.

Table 1. Parts List

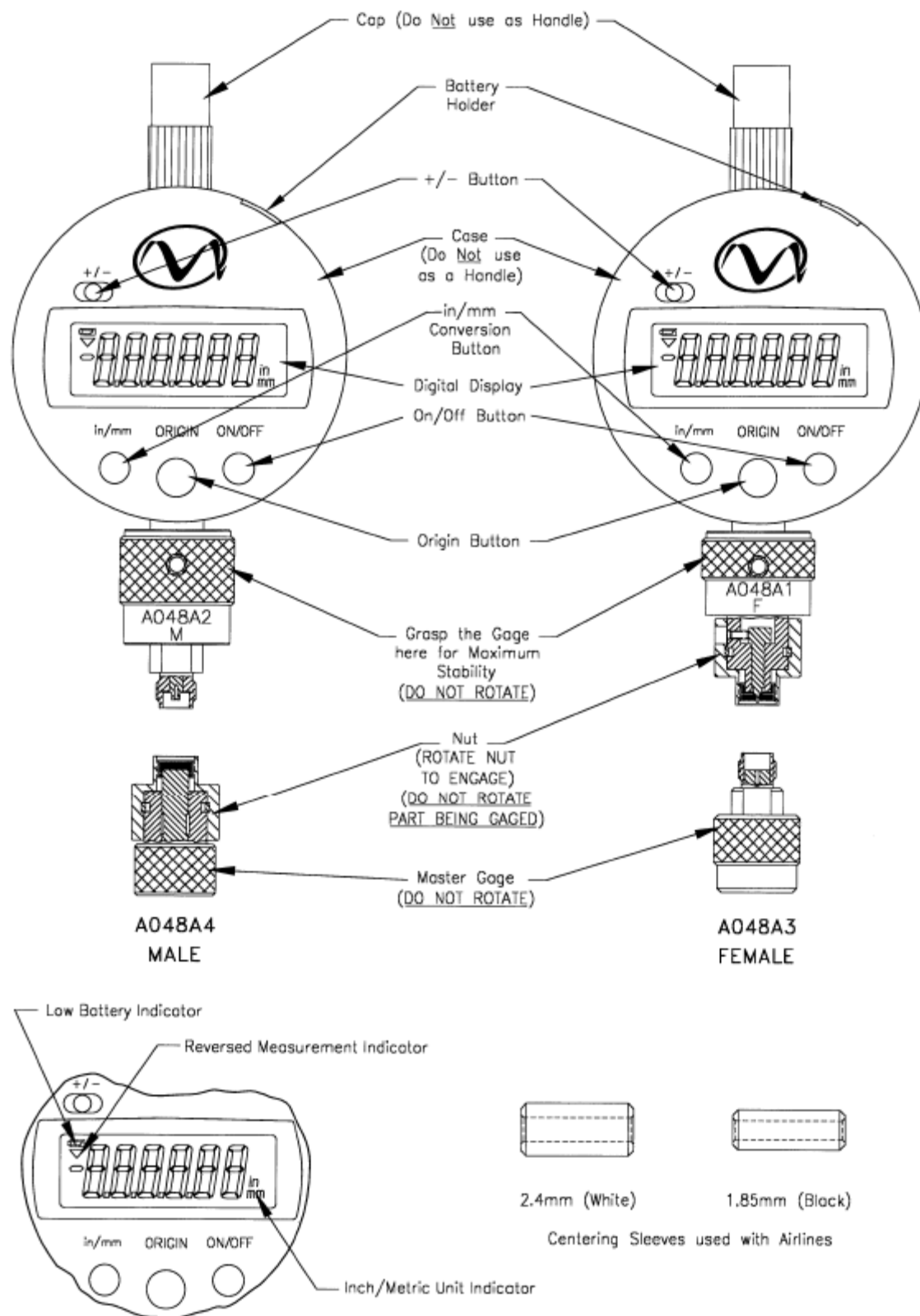
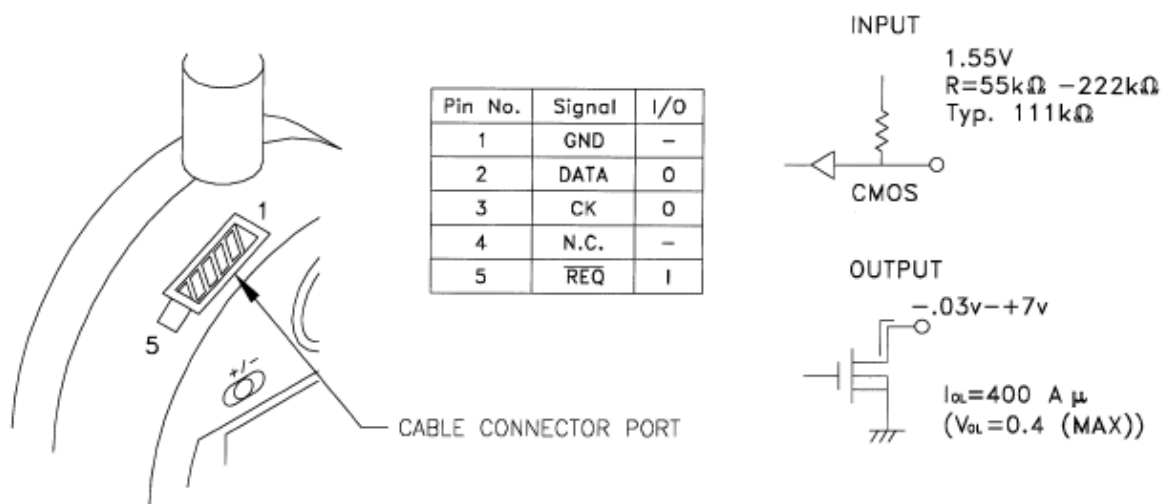
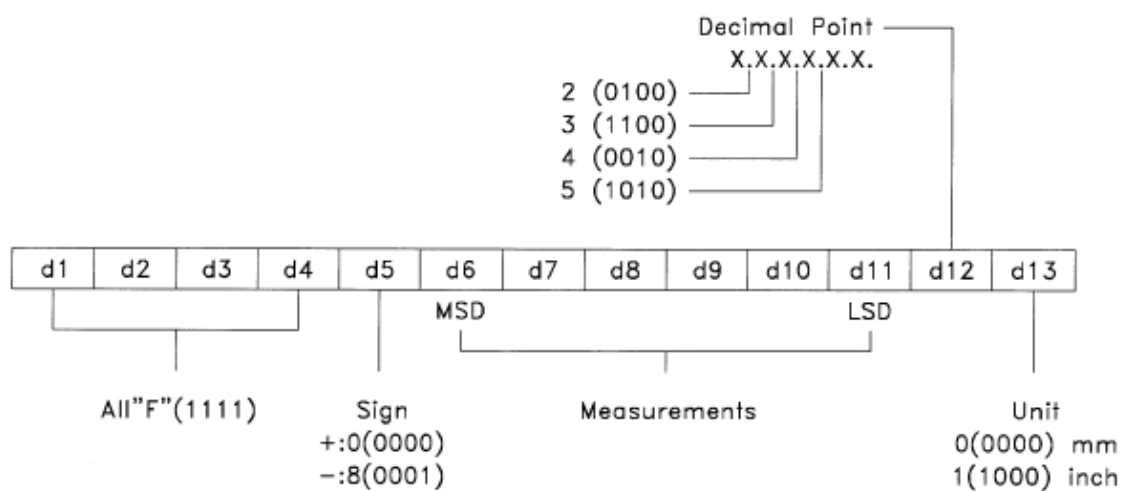


Figure 1. The A048A Connector Gage Kit

Output Connector Specification:



Output Data Format:



Timing Chart:

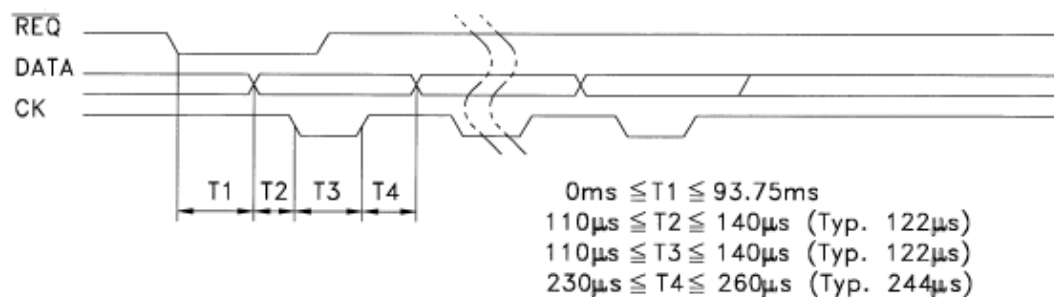


Figure 2. Data Output

Operation

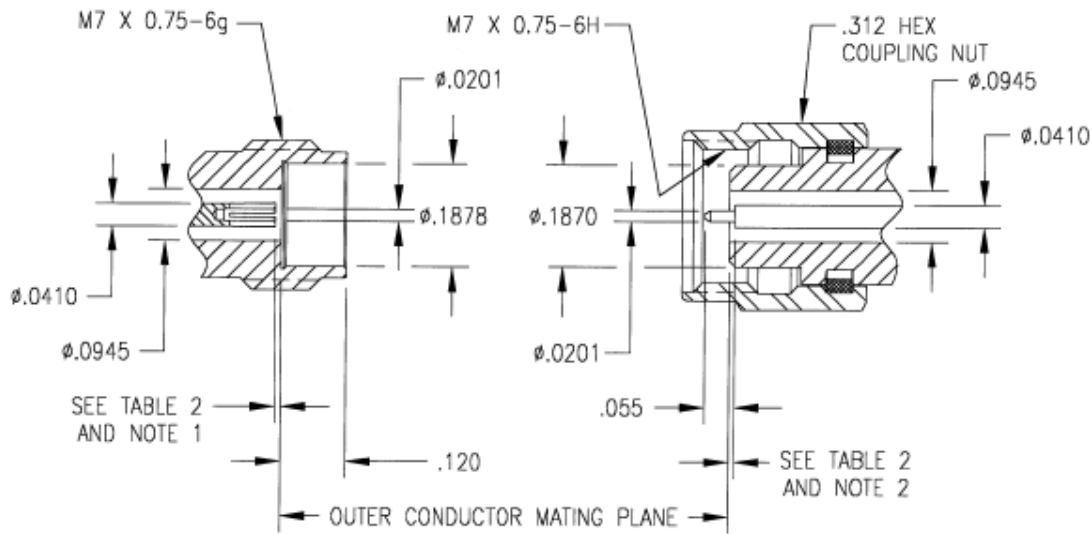


Figure 3. Critical Contact Pin Location Dimensions of 2.4mm Precision Connectors

2.4mm Connector Grade	Pin Depth Specifications	
	mm	Inches (Ref.)
IEEE-287 GPC	0.000 +0.050 -0.000	0.0000 +0.0020 -0.0000
IEEE-287 LPC	0.000 +0.013 -0.000	0.0000 +0.0005 -0.0000
Maury Precision (SEE NOTE 3)	0.000 +0.050 -0.000	0.0000 +0.0020 -0.0000

Table 2. Center Contact Locations for 2.4mm Connectors

Notes

1. Female contact pin location – use gage assembly marked “F”.
2. Male contact pin location – use gage assembly marked “M”.
3. Tighter tolerances can be used at user’s discretion. For high precision calibration components, Maury recommends and uses +0.000 to +0.013mm (+0.0000 to +0.0005 inches) for center contact pin shoulder recession behind the outer conductor mating plane.
4. In reference to the outline drawing above: Minus (-) tolerances indicate a protruding condition above the outer conductor mating plane. Plus (+) tolerances indicate a recessed condition below the outer conductor mating plane.
5. Other dimensions shown in this figure are shown since they affect the mating of the gage assemblies’ gaging mechanism (bushing and pin). Deviation from these dimensions may cause measurement errors or improper fit between the gaging mechanism and the connector being measured. Consult our Customer Service Department on measuring connectors with interface dimensions other than specified above.
6. When operating the gage: A minus (-) indicates a recessed condition below the outer conductor mating plane. A positive reading indicates a protruding condition above the outer conductor mating plane.
7. Operators are able to validate note 6 by doing the following: After zeroing the gage you will have a minus (-) reading when nothing is connected. As the pin travels towards the gage you will see the value on the gage begin to change in the positive direction.

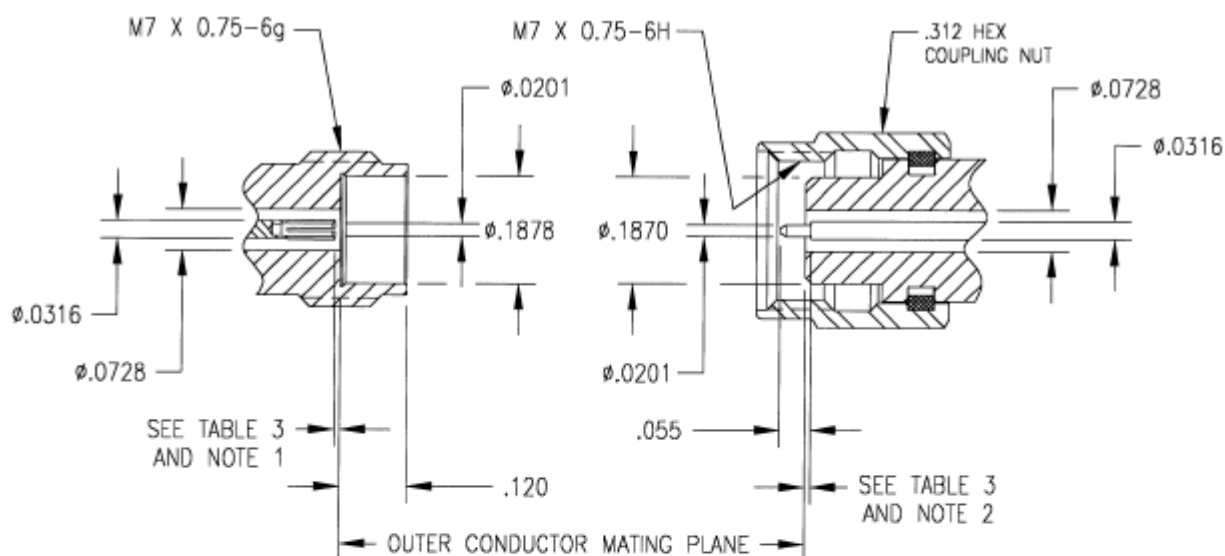


Figure 4. Critical Contact Pin Location Dimensions of 1.85mm Precision Connectors

1.85mm Connector Grade	Pin Depth Specifications	
	mm	Inches (Ref.)
IEEE-287 GPC	0.000 +0.050 -0.000	0.0000 +0.0020 -0.0000
IEEE-287 LPC	0.000 +0.013 -0.000	0.0000 +0.0005 -0.0000
Maury Precision (SEE NOTE 3)	0.008 +0.023 -0.005	0.0003 +0.0009 -0.0002

Table 3. Center Contact Locations for 1.85mm Connectors

Notes

1. Female contact pin location – use gage assembly marked “F”.
2. Male contact pin location – use gage assembly marked “M”.
3. Tighter tolerances can be used at user's discretion. For high precision calibration components, Maury recommends and uses +0.000 to +0.013mm (+0.0000 to +0.0005 inches) for center contact pin shoulder recession behind the outer conductor mating plane.
4. In reference to the outline drawing above: Minus (-) tolerances indicate a protruding condition above the outer conductor mating plane. Plus (+) tolerances indicate a recessed condition below the outer conductor mating plane.
5. Other dimensions shown in this figure are shown since they affect the mating of the gage assemblies' gaging mechanism (bushing and pin). Deviation from these dimensions may cause measurement errors or improper fit between the gaging mechanism and the connector being measured. Consult our Customer Service Department on measuring connectors with interface dimensions other than specified above.
6. When operating the gage: A minus (-) indicates a recessed condition below the outer conductor mating plane. A positive reading indicates a protruding condition above the outer conductor mating plane.
7. Operators are able to validate note 6 by doing the following: After zeroing the gage you will have a minus (-) reading when nothing is connected. As the pin travels towards the gage you will see the value on the gage begin to change in the positive direction.

Specifications

In order to determine the specifications for the A048A gages, Maury performed an extensive gage study with the gages at the Maury factory. The study involved the use of multiple gages and personnel making multiple measurements of a known standard. A statistical analysis was performed on the data collected and the resultant +/- 2-sigma value was determined. Maury considers this value to be the achievable uncertainty under carefully controlled conditions in a controlled environment. The +/- 2-sigma uncertainty for the Maury A048A connector gage, male or female, is +0.0018mm (± 0.000070 inches).

Applications

Your A048A is an easy to use connector gage kit featuring a "thread on" design for hands-free operation to determine the critical contact location of 1.85 and 2.4mm connectors. These dimensions must be maintained in order to provide the required electrical performance and mechanical mating of the connectors. Destructive interference may result if either the female or male contact protrudes beyond the outer conductor mating planes. Conversely, an excessive gap of the center contacts when mated produces high reflections and impaired overall system performance. See **Figures 3 and 4**.



Figure 5

While primarily designed for metrology grade environment, the A048A can be used in production and for general laboratory testing of connector interfaces.



Figure 6

The A048A greatly simplifies setting the interface of sliding loads by freeing the user's hands to perform the necessary adjustments.



Figure 7

The A048A, along with the centering sleeves, is very useful for measuring the interface dimension of beadless 1.85mm and 2.4mm air lines.

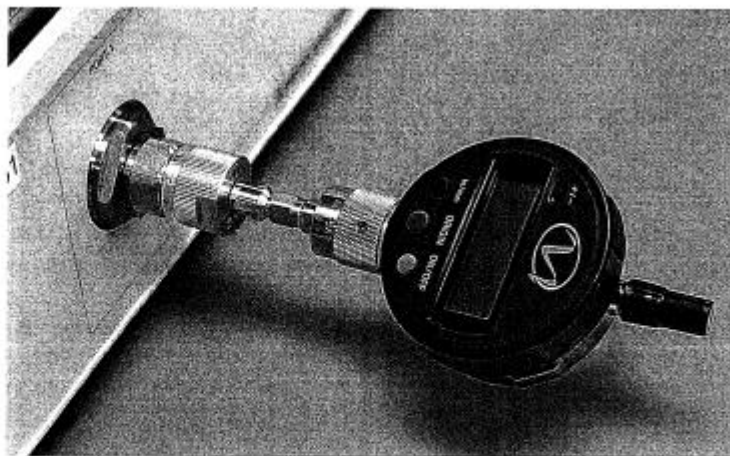


Figure 8

Figure 8 shows the A048A gaging a network analyzer test port connector.

Visual Inspection

Inspect all connectors carefully before each use. If a connector shows deep scratches, dents, uneven wear, or particles clinging to the mating plane surfaces, clean it and inspect again. Damaged connectors should be set aside for repair. Also, try to determine the cause of the damage before making further connections.

Cleaning

Use dry compressed air at a very low velocity first; then a solvent such as isopropyl alcohol. Clean the contacting surfaces, alignment parts and threads using a lint free swab. Then re-inspect the connector to make sure that no fibers have been left around the contact and interface surfaces.

NOTE: To maintain cleanliness, always wear cotton gloves when performing any of the procedures described in this manual.

CAUTION: For optimum measurements and to prevent damage, always hold the connector gage on the knurled part of the bushing when connecting. Never rotate parts against each other since this could yield faulty readings or damage the mating surfaces.

Error Messages

Figure 9 show the error messages which the indicator may display, as well as the appropriate response.

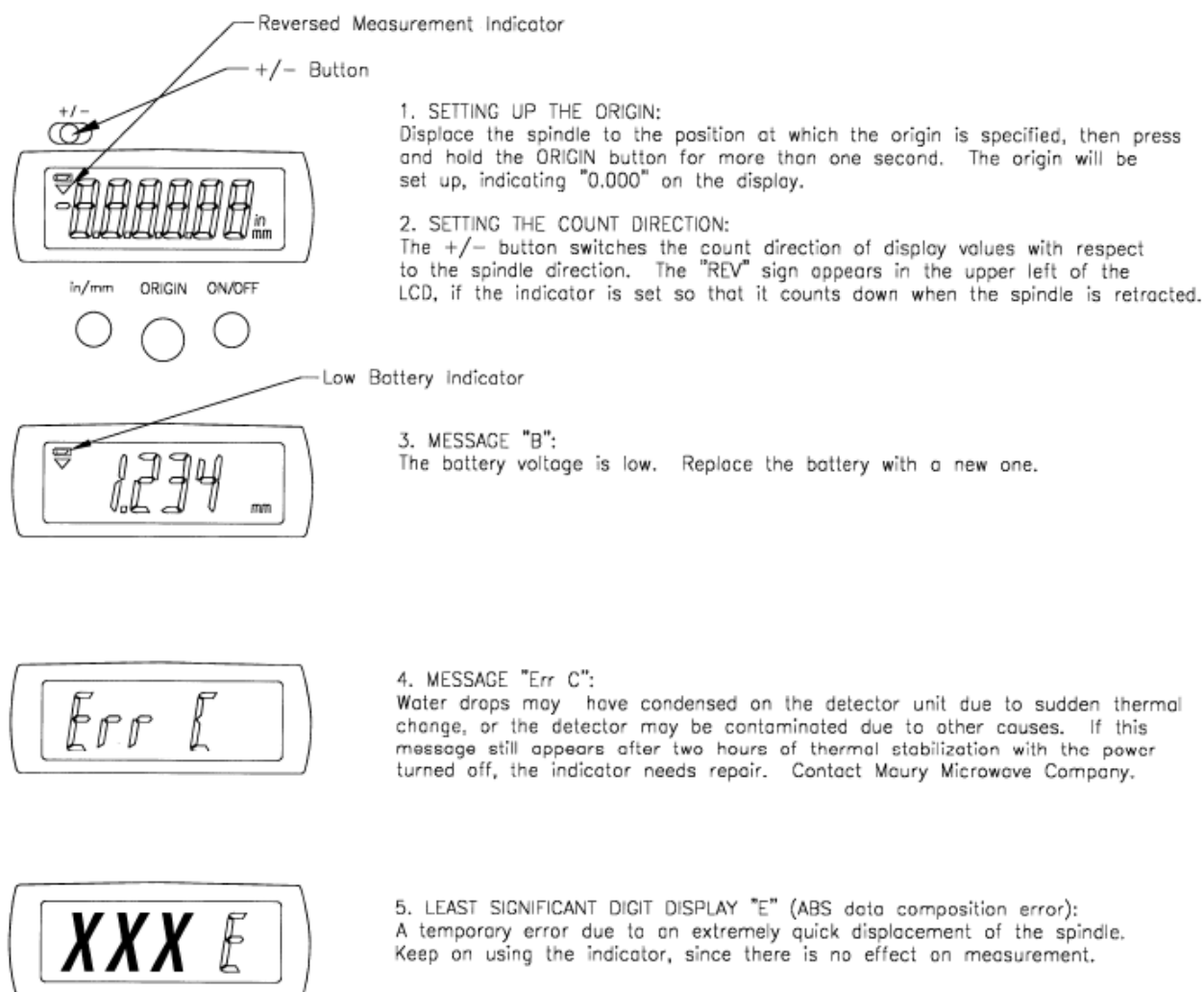


Figure 9. Operating Procedures and Error Messages

Gaging Precision 1.85 and 2.4mm Connectors

The critical mechanical specification in precision 1.85 and 2.4mm connectors is the recession (setback) of the center conductor relative to the outer conductor mating plane (Figure 3 and 4). No protrusion of the center conductor in from of the outer conductor mating plane is allowable.

The following procedure applies to both connector gages. For the female connector gage A048A1, use the A048A3 master setting gage and for the male connector gage A048A2, use the A048A4 master setting gage, respectively.

Procedure: Refer to Figure 10

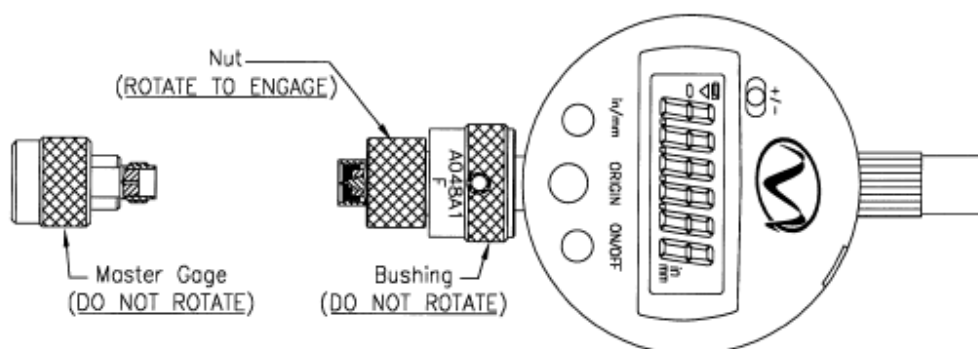
(Example for measuring female connector.)

1. Visually inspect the mating surfaces of your A048A1 connector gage and A048A3 master setting gage
2. Clean all mating surfaces of the master setting gage and connector gage using the recommended cleaning procedure above.
3. Push the ON/OFF button on the indicator to turn on the display.
4. Push the in/mm button until the display reads "in"
5. Set the +/- button so that the REV sign does **NOT** appear on the LCD.

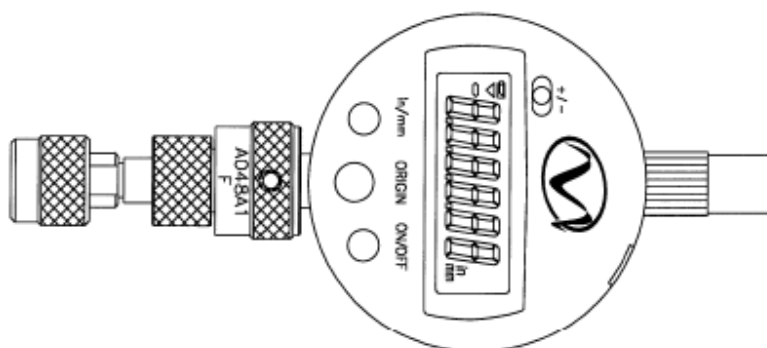
NOTE: Without anything connected to the gage and the REV sign **NOT** appearing in the display the gage should show a minus (-) number.

6. Align the connector gage and master setting gage carefully, then rotate the nut on the gage, allowing it to engage with the thread of your A048A3. Apply light finger pressure avoiding rotation of the mating planes. If you use a torque wrench, it should be rated at 8 inch-pounds. Maury model 8799A1 is recommended and supplied with the A048A kit. Hold the corresponding part with the 5/16 open end wrench supplied with the kit.
7. Push and hold the ORIGIN button until the display reads 0.0000 inches. This sets the indicator reading to the nominal dimension of .000" (or other nominal dimensions provided by other master setting gages).
8. Gently loosen and disengage the connector gage and the master gage. You are now ready to measure.

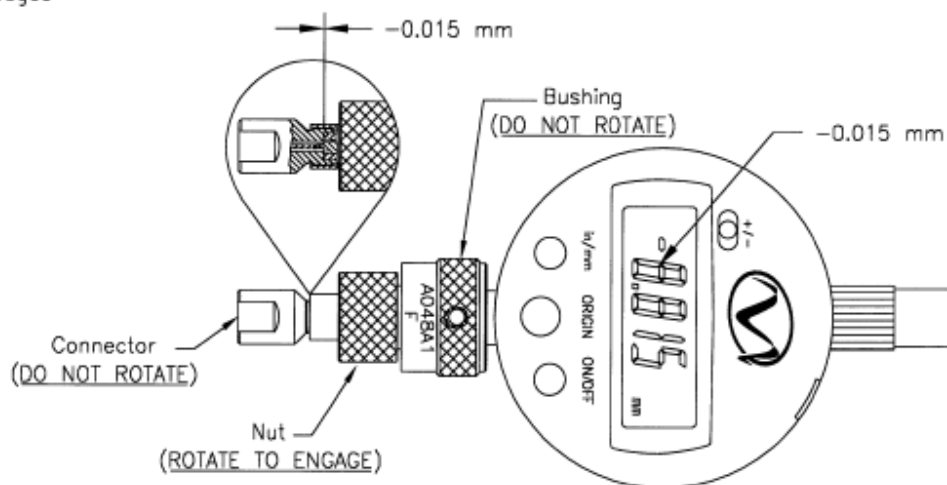
Align your Connector Gage and
the Master Gage



Zero the Connector Gage
using the Master Gage



Gently Connect the Device
to be Gaged



**Figure 10. Gaging Precision 1.85mm and 2.4mm Female Connectors
(Applies Equally to the Male Connectors)**

Sliding Loads and Air Lines

Most sliding loads come equipped with a simple center conductor lock consisting of some form of clamping mechanism. The sliding load connector interface is usually set for a “zero gap” or “flush set” as described below.

NOTE: Gaging the sliding load is not required for zero gap operation.

For flush set operation, the sliding load center conductor is first set to the correct position using a connector gage. Then the center conductor is aligned axially and connected to the mating connector.

NOTE: The nominal interface dimension is set using the A048A type connector gage.

Gaging Sliding Loads

CAUTION: This section may not have complete information for your particular sliding load. Please consult the manual for your sliding load first.

The following procedure applies to both female and male sliding loads. For female sliding loads, use the A048A1 and A048A3 master gage. For male sliding loads, use the A048A2 and A048A4 respectively. For in-depth information on how to properly set the interface dimension, refer to the manual provided with your sliding load.

Procedure

Refer to **Figures 11 and 12.**

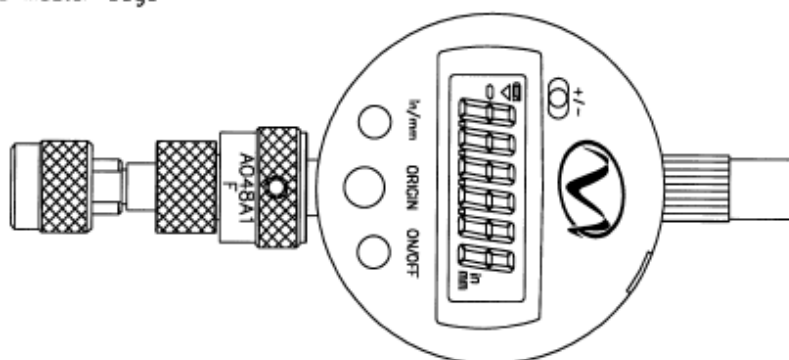
1. Visually inspect the mating surface of the connector to be gaged before making a connection.
2. Clean all mating surfaces: connector, master setting gage and connector gage.
3. Zero set your connector gage with the appropriate master gage.
4. Expose the center conductor of the sliding load to allow easy engagement of the gaging pin.



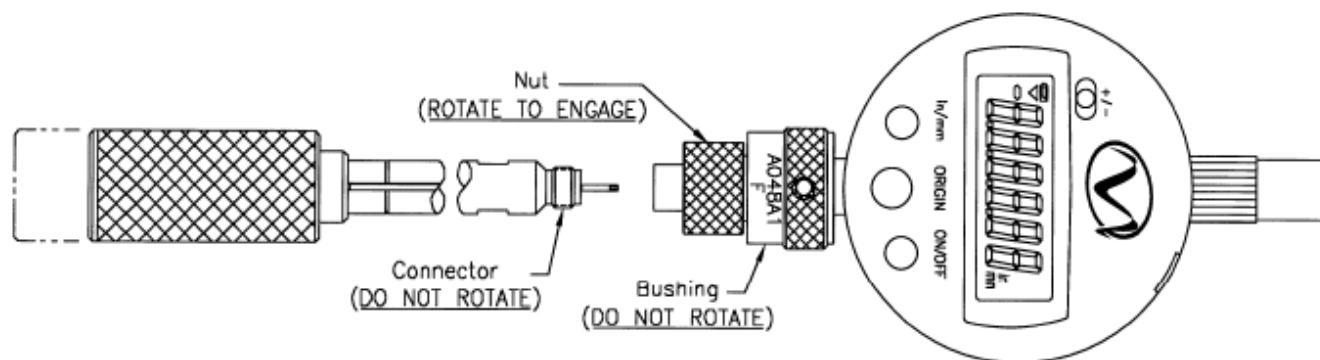
Figure 11

5. Make a gentle connection. Avoid rotation of the mating planes to prevent excessive wear. When using a torque wrench, make sure it is rated at 8 inch pounds. Allow the center conductor to gently push back during the mating process. Set the interface dimensions following the procedure outlined in the operating instructions of your sliding load.

Zero the Connector Gage
using the Master Gage



Expose the Free Floating Center Conductor
for Ease of Engagement



Set Proper Interface
Dimensions

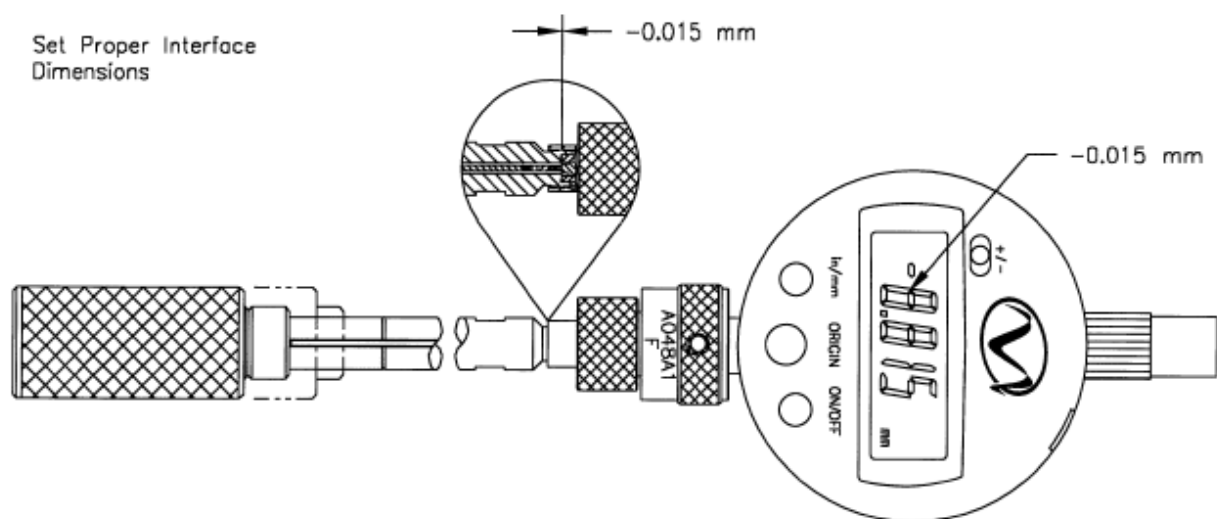


Figure 12. Gaging Precision Sliding Loads

Gaging 1.85 and 2.4mm Air Lines

NOTE: Use care when handling air line parts. Wear cotton gloves to prevent excessive thermal expansion.

When using a 1.85 or 2.4mm airline, a master gage is first connected to one end of and the corresponding A048A indicator gage is connected to the opposite end.

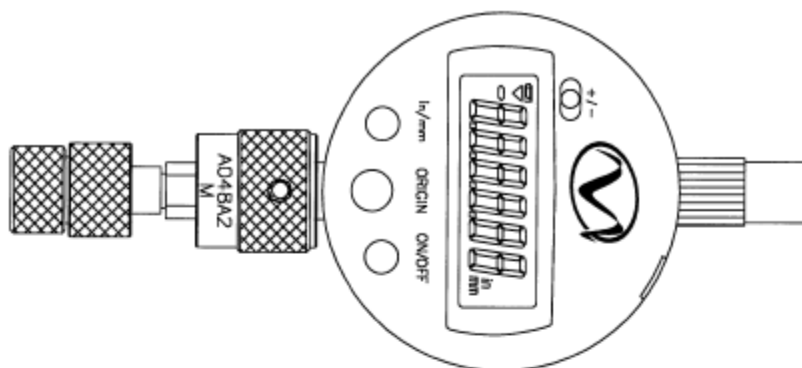
Procedure

See **Figure 13**

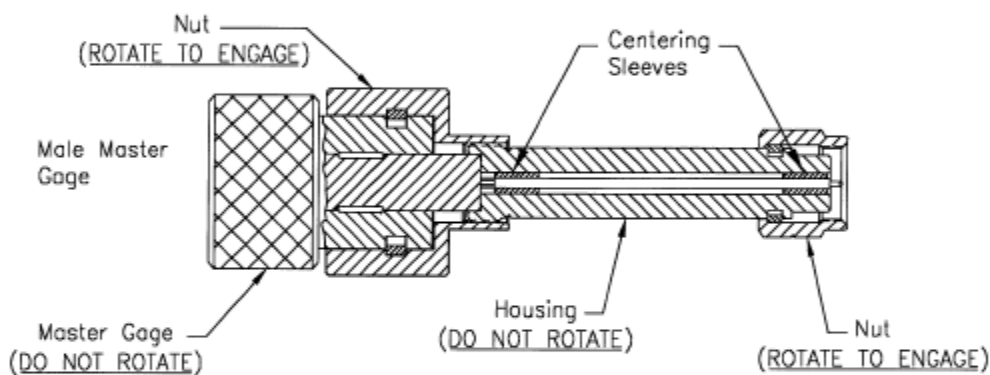
NOTE: Sleeve set is required for this measurement (see parts list **Table 1**).

1. Visually inspect the mating surfaces on the airline to be gaged before making a connection, and clean all mating surfaces.
2. Zero set the connector gage using the respective master setting gage.
3. Slip a centering sleeve on one end of the center conductor and insert into the air line. Avoid scratching the outer conductor while inserting the center conductor. Make sure that the sex of the outer and center conductors comply.
4. Connect the corresponding master setting gage onto the same end of the air line where the sleeve was inserted.
5. Insert the second sleeve into the open end of the air line.
6. Align the air line and your A048A; then carefully connect the connector gage. Tighten finger tight avoiding rotation of the mating surfaces against one another. When using a torque wrench, make sure it is rated at 8 inch pounds.

Zero the Connector Gage
using the Master Gage



Insert Centering Sleeves and Connect Master Gage
to Airline or Two Port Standard



Engage Airline and
Connector Gage

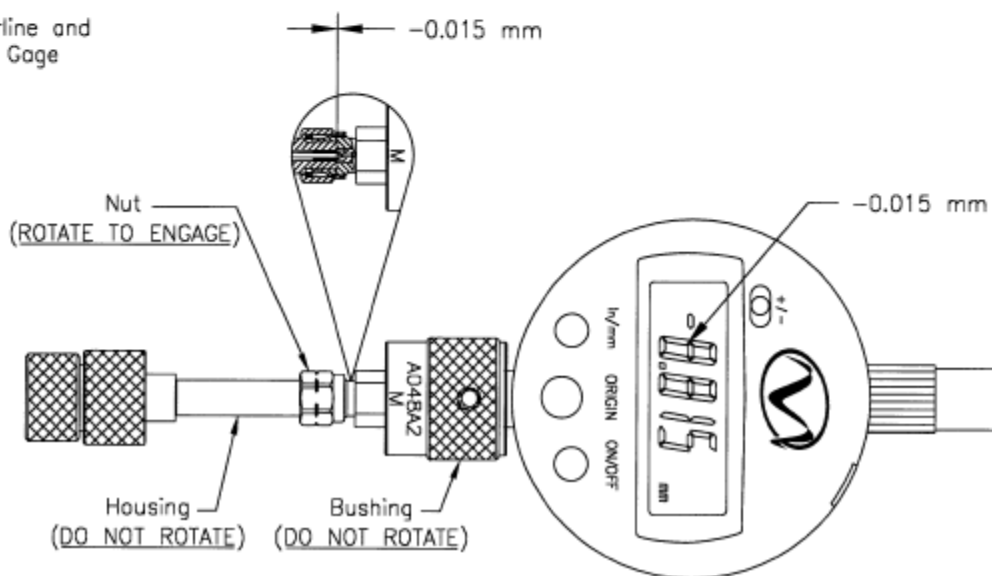


Figure 13. Gaging Beadless Precision 1.85mm and 2.4mm Airlines

Maintenance and Calibration

Maintenance

This connector gage kit is relatively maintenance free if the components are handled with the same care that is appropriate to all precision equipment. As with any precision component, proper care should be taken to assure clean mating surfaces, correct alignment when mating, and proper torquing of connectors. To help maintain the integrity of the components in this kit, routine visual inspection and cleaning of mating surfaces is recommended. Failure to do so may result in degraded repeatability and accuracy, and may damage any mated devices. Refer to the *Operation* section of this User Guide for detailed instructions on visual inspection and cleaning.

Calibration

To maintain verification that a connector gage kit is performing to traceable specifications, we recommend that all kits be periodically returned to Maury Microwave for calibration. The typical calibration cycle is one year, although actual need may vary depending on usage.

(This page intentionally blank)

Data Sheet Resources

2Y-051 – Connector Gages and Connector Gage Kits

<http://maurymw.com/pdf/datasheets/2Y-051.pdf>

2Y-050A – Torque Wrenches

<http://maurymw.com/pdf/datasheets/2Y-050A.pdf>

(This page intentionally blank)

Corporate

Maury Microwave Corporation
2900 Inland Empire Boulevard
Ontario, California 91764-4804
United States of America

Tel 909-987-4715
Fax 909-987-5855
eMail maury@maurymw.com

Sales

Tel 909-204-3224
Fax 909-987-1112
eMail maury@maurymw.com

Customer Support

Tel 909-204-3283
Fax 909-987-1112
eMail support@maurymw.com

Web Site <http://maurymw.com>

Web Resources

Visit our web site for additional product information and literature.

Maury Calibration Kits
http://maurymw.com/Precision/VNA_Cal_Kits.php

Maury Connector Gage Kits
http://maurymw.com/Precision/Connector_Gage_Kits.php

Maury Precision Coaxial and Waveguide-to-Coaxial Adapters
http://maurymw.com/Finder/Adapter_Finder.php

Maury Applications Notes Library & Technical Articles Archive
<http://maurymw.com/Support/tech-support.php>

Maury Sales Representative Finder
<http://maurymw.com/Support/find-sales-rep.php>