



USER GUIDE

AUTOMATED TUNER

Models NT Series



USER GUIDE

AUTOMATED TUNER

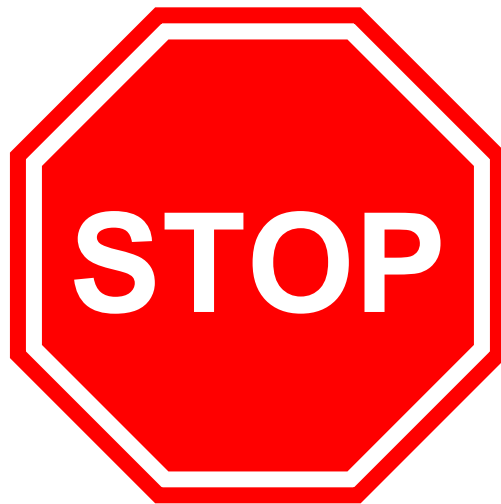
Models NT Series



2900 Inland Empire Boulevard
Ontario, California 91764-4804 USA
Phone: (909) 987-4715
Facsimile: (909) 987-1112

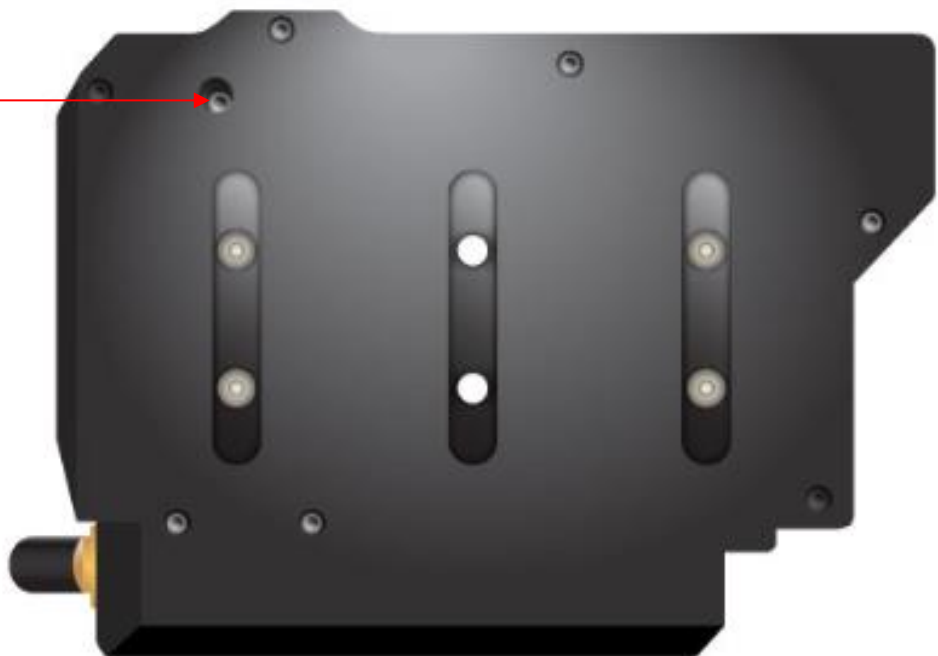
maurymw.com

XT985-229 (Rev A) 10/2024
Copyright © 2025 Maury Microwave. All rights reserved.



To protect this unit during transit, the tuner carriage has been locked into position via a locking screw. Before applying power and before using the tuner, it is necessary to unlock the tuner by removing the locking screw. Retain this notice along with all packing materials in the event the unit requires future shipment. Before shipping the unit, refer to the Appendix for packaging instructions. Shipping the tuner without properly locking its carriage(s) will cause damage to the carriage(s) and other parts.

Locking Screw





Warranty

Maury Microwave hardware products are warranted against defects in materials and workmanship for a period of one year from date of shipment. During the warranty period, Maury Microwave will, at its option, either repair or replace products which prove to be defective.

Maury Microwave software products are warranted against defects in material and workmanship of the media on which the product is supplied for a period of ninety (90) days from date of shipment. Maury also warrants that the product shall operate substantially in accordance with published specifications during the same warranty period. During the warranty period, Maury Microwave will, at its option, either repair or replace products which prove to be defective. Maury does not warrant that the operation of the product shall be uninterrupted or error-free.

For warranty service or repair, all products must be returned to Maury Microwave and must be issued a return authorization number by Maury prior to shipment. Buyer shall prepay shipping charges to Maury. Obligation is limited to the original Buyer.

Limitation of Warranty

The foregoing warranty shall not apply to defects resulting from improper or inadequate maintenance by the Buyer, unauthorized modification or misuse, operation outside of the environmental specifications for the product, or wear resulting from normal use. No other warranty is expressed or implied. Maury Microwave specifically disclaims the implied warranties of merchantability and fitness for a particular purpose.

The remedies provided herein are the Buyer's sole and exclusive remedies. Maury Microwave shall not be liable for any direct, indirect, special, incidental, or consequential damages whatsoever (including, without limitation, damages for loss of business profits, business interruption, loss of business information, or any other financial loss) arising out of the Buyer's use of or inability to use the product, even if Maury or an authorized Maury dealer has been advised of the possibility of such damages.



CONTENTS

GENERAL INFORMATION..... 1

NT Series Automated Tuners 1

Operation 2

Specifications 2

GETTING TO KNOW YOUR TUNER..... 3

INSTALLATION..... 5

Safety Precautions 5

Software Installation 6

Tuner Installation..... 6

MAINTENANCE..... 7

Connector Maintenance 7

APPENDIX..... 8

Packaging of the Automated Tuner 8

Data Sheet Resources 10



TABLES

Table 1. Tuner Electrical Specifications2

Table 2. Connector Specifications.....6

Table 3. Travel Range.....7

FIGURES

Figure 1. Typical VSWR and Return Loss response of an NT Tuner without Integrated Coupler ...1

Figure 2. Typical VSWR and Return Loss response of an NT Tuner with an Integrated Coupler ...2

Figure A 1. Packing Kit9

Figure A 2. Locking Screw and Shipping Locations9



GENERAL INFORMATION

NT Series Automated Tuners

The NT-8G-65G-1C & NT-8G-65G-1C-C Series Automated Tuners are precision electromechanical tuners. These tuners serve as a matching network to reduce reflections caused by mismatches present in a transmission line or to introduce a controlled mismatch into an otherwise matched transmission line.

The tuners have two probes to cover the operational frequency range. The reflection magnitude is controlled by an automated probe interacting with the center conductor of the slab line. The probe position along the slabline determines the phase of the reflection.

The non-contacting probes are moved along the slabline by the carriage. A linear piezoelectric actuator will provide a minimum of one-half wavelength lateral movement of the probe at the tuner's lowest rated frequency.

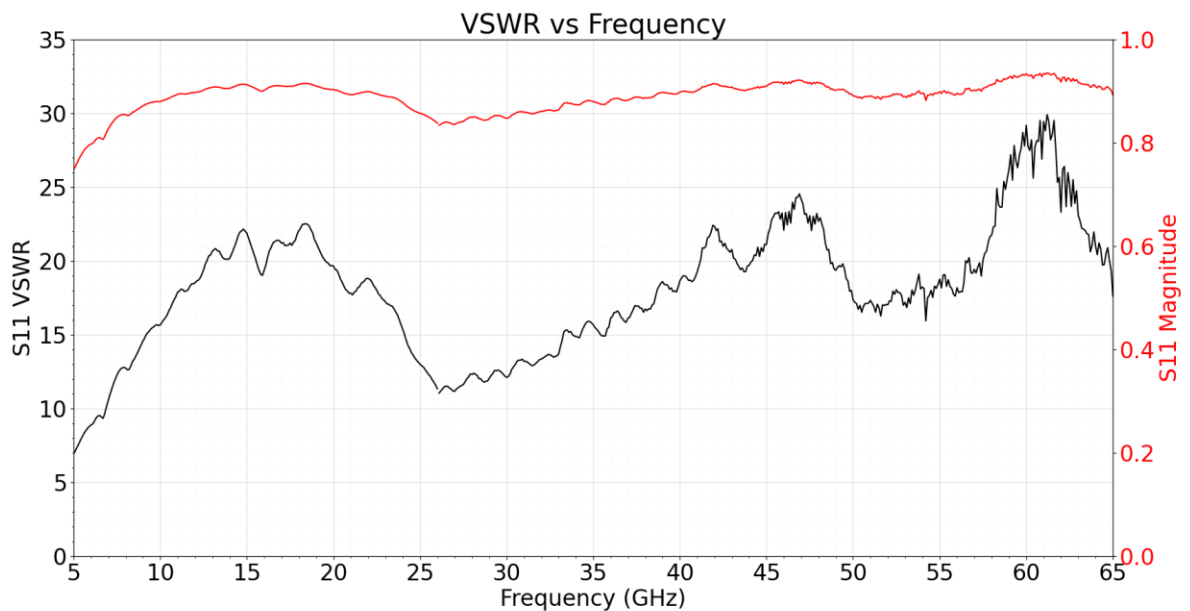


Figure 1. Typical VSWR and Return Loss response of an NT Tuner without Integrated Coupler

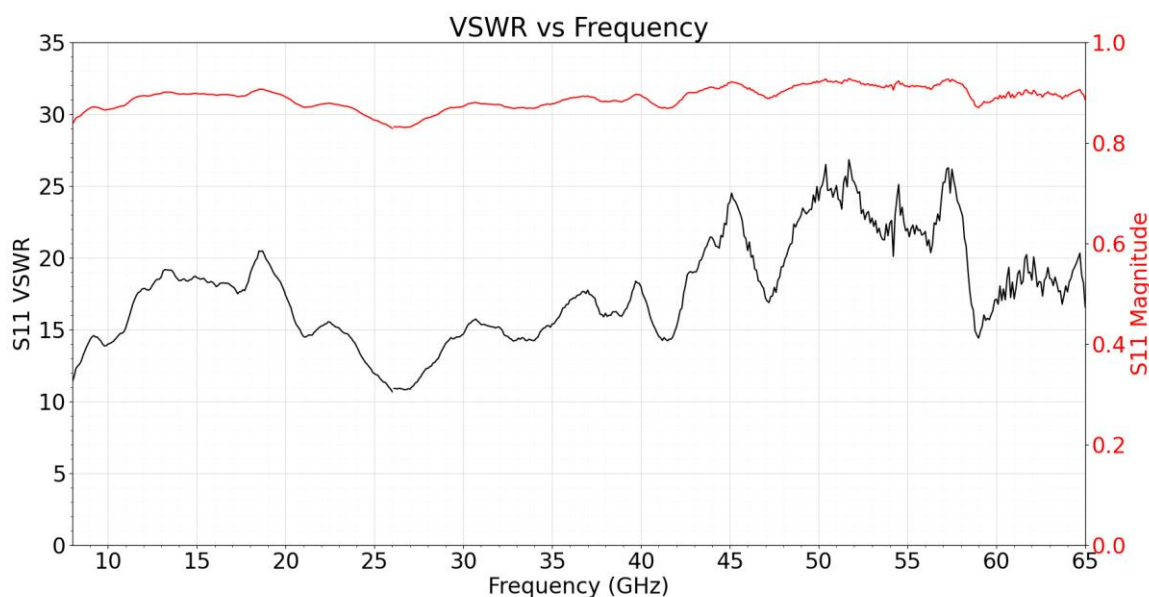


Figure 2. Typical VSWR and Return Loss response of an NT Tuner with an Integrated Coupler

Operation

The NT series of tuners support multiple mode of remote-control operation:

- Web based control using Ethernet connection
- Telnet based control using Ethernet connection (port 5024)
- COM port serial communication using USB connection (virtual COM port)
- IVCAD compatible driver (TunXtIP.exe), version 3.10 or higher
- Mtune3 - <https://apps.maurymw.com>

Please consult the XT981-557 User Manual for information on configuring your computer for the operation of the tuner using Ethernet or USB port.

Specifications

Electrical Specifications

Model	Connector Type	Frequency Range (GHz)	Matching Range (min)	Insertion Loss ⁽¹⁾ (max)	Vector Repeatability (min)	Power Capability ⁽²⁾	Integrated Coupler ⁽³⁾
NT-8G-65G-1C	1.85mm (M/F)	8.0 – 65	10:1	1.2 dB	-40 dB	10 W CW 100 W PEP	No
NT-8G-65G-1C-C	1.85mm (M/F)	8.0 – 65	10:1	1.3 dB	-40 dB	10 W CW 100 W PEP	Yes

Table 1. Tuner Electrical Specifications

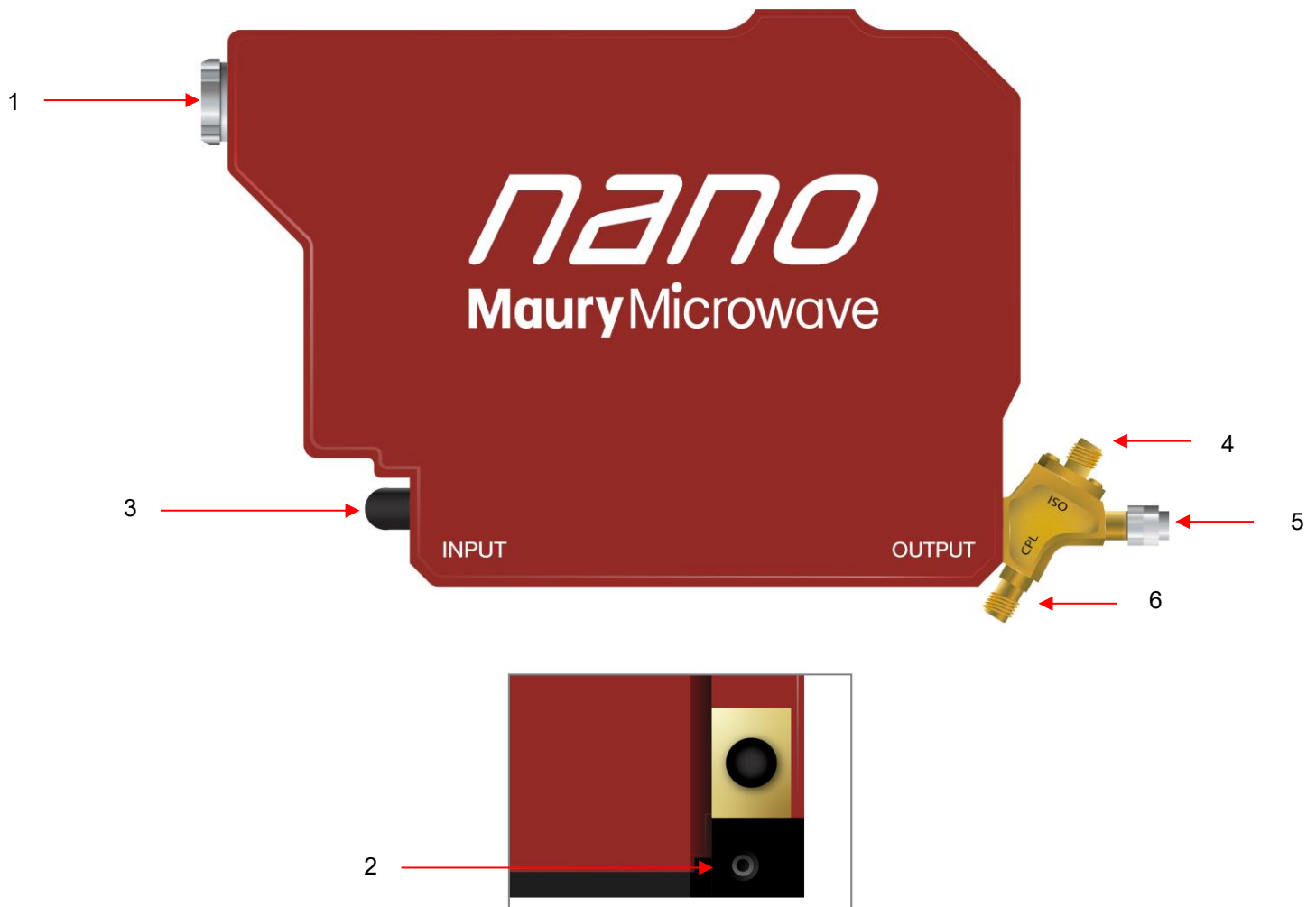
⁽¹⁾ With probe fully retracted.

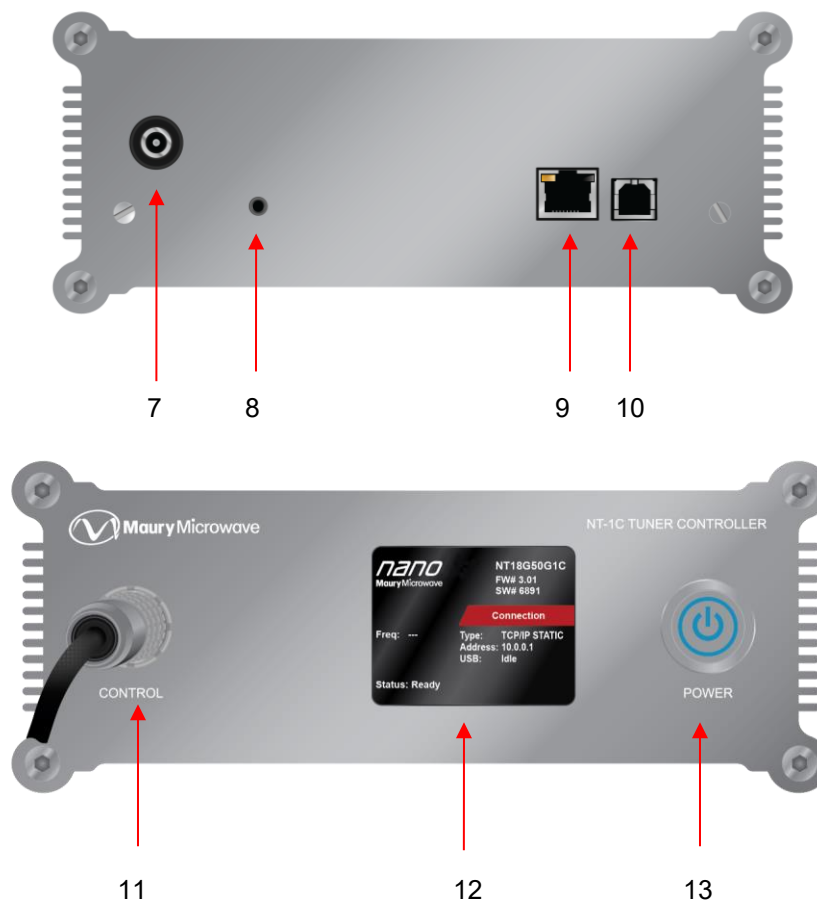
⁽²⁾ Power rated at maximum VSWR.

⁽³⁾ 1.85mm (F) for CPL and ISO Ports (For model with integrated Coupler)



GETTING TO KNOW YOUR TUNER





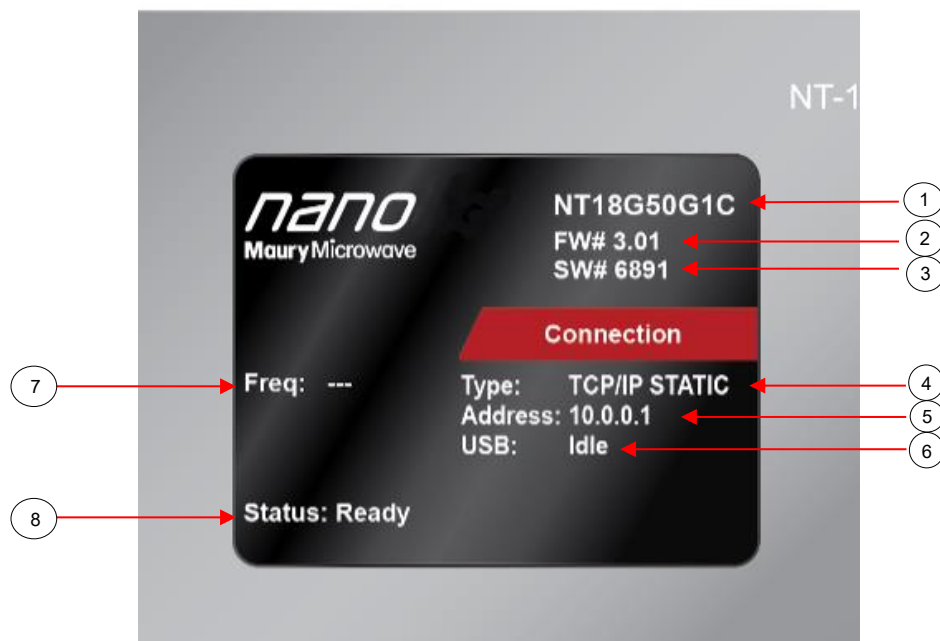
1. Control Cable Connector (Tuner)
2. Locking Screw Storage (Tuner)
3. Input RF Port
4. ISO RF Port (Only available on NT with Coupler Option)
5. Output RF Port
6. CPL RF Port (Only available on NT with Coupler Option)
7. Power Supply Port
8. Reset Button
9. Ethernet Port
10. USB Port
11. Control Cable Connector (Tuner Controller)
12. Display
13. Power Button



An LCD display is mounted in the front panel of the controller.

The display has information that provides the user the status of the controller:

- 1) Model Number of the tuner
- 2) Firmware version.
- 3) Serial number of the tuner.
- 4) LAN Connection Type (STATIC or DYNAMIC)
- 5)
 - IP address of the controller if connected to the network
 - "Network Offline" if TCP/IP is not connected.
- 6) "Active" if the USB is connected to the PC and "Idle" if no USB is connected to the PC.
- 7) The control frequency of the tuner characterization file.
- 8)
 - "Ready" when the controller/tuner is ready to receive commands.
 - "Done" if the tuner has completed initialization or movement.
 - "Cal data loaded" after a successful remote CALIB command.
 - "Startup" when firmware is loading.
 - "Rebooting" when a new firmware version is loaded.



INSTALLATION

Safety Precautions

The NT Series Automated Tuners are not electrically, chemically, or mechanically hazardous to the operator. The following precautions are necessary to protect the instrument:

- Use extreme care in moving, handling, and storing this instrument, and avoid physical contact with other instruments.



- The tuner must be connected to the tuner controller before turning on the power to the tuner controller to avoid potential damage to the tuner.
- Never allow the instrument to be supported by the connectors.
- Do not move the instrument by pulling an attached cable.
- Visually and mechanically inspect the connectors regularly to maintain performance characteristics and minimize damage to the instrument or any mating devices.
- To keep the precision components inside the tuner clean, the cover should be kept on the tuner at all times, except when the tuner is being serviced or in use.

Software Installation

- If this is the first time a Maury Tuner is being installed on the host computer, MTune3, must first be installed before connecting the tuner to the computer (<https://apps.maurymw.com>).

Tuner Installation

- Before installing the tuner, inspect each end of the cable connectors and the tuner connectors to ensure that all are clean and undamaged before connecting.
- The tuner must be connected to the tuner controller before turning on the power to the tuner controller to avoid potential damage to the tuner.
- Connect the DC power to the tuner controller and either RJ45 network or USB cables.
- When using USB connection, the host computer will detect the tuner as a new device and automatically install the tuner drivers (Tuner_USB.inf)
- When using TCPIP connection, the computer's Ethernet connector has to be configured to match the tuner network settings. See XT981-557 User Manual for more information.



MAINTENANCE

Connector Maintenance

Periodically inspect the connectors for signs of damage. Tuners with damaged connectors should be returned to the factory for repair. Connectors should be cleaned using dry compressed air of a very low velocity first; then cleaned with a solvent such as isopropyl alcohol. Clean the contacting surfaces, alignment parts, and threads using a lint-free swab. Reapply dry compressed air to evaporate any residual solvent. After cleaning, re-inspect the connector to make sure that no fibers have been left around the contact or mating surfaces.

Mechanical inspection of the connector requires the use of a connector gauge (refer to Table 2 for recommended gauge kits). The connector gauge will measure the location of the mating surface on the center conductor with respect to the mating surface on the outer conductor. The center conductor surface should not protrude beyond the outer conductor surface or be recessed more than specified in Table 2. If this condition is not satisfied, do not connect any other device to the connector (connector repair is required).

Table 2. Connector Specifications

Model	Connector	Gage Kit	Pin Depth Specification (recessed)
NT-8G-65G-1C	1.85mm	MMC A048A	0 to 0.002"
NT-8G-65G-1C-C	1.85mm	MMC A048A	0 to 0.002"



APPENDIX

Packaging of the Automated Tuner

All shipping containers and packing materials for the Automated Tuner should be retained in the event it becomes necessary to return the instrument to the factory. If the instrument fails to meet specifications or the contents are incomplete, notify the carrier and Maury Microwave Corporation immediately and wait for instructions before returning any products. If you must return the tuner for any reason, please refer to the following packaging instructions.

Packing Instructions

To protect the tuner during transit, the carriage must be secured in its locking position and the tuner packaged in its original shipping container and packing materials. If you do not have the original shipping container and/or packing materials, contact your Maury Microwave representative or the factory and a packaging kit will be provided. See Figure A 1. The instructions provided herein will properly prepare the tuner for return to the factory.

Instructions for Locking Tuner Carriage Before Shipping

Note: Locking Tuner Carriage can also be done via Mtune3.

Step 1. Initialize the tuner

- Launch Telnet network protocol and connect to the tuner (See XT981-557 user manual for more information)
- Type the command "INIT" to initialize the tuner.
- Once the tuner stops moving, query the position of the motor to verify initialization has completed successfully. Type "POS?" The position should read (Pos 1, & 2 can vary by ± 50 steps)
 - Stat = 1
 - Pos1 = 100
 - Pos2 = 2,600,000
 - Pos3 = 2,600,000

Step 2. Move the tuner to the lock position

- Using Telnet, type the command "PARK".
- Once the tuner has stopped moving, proceed to step 3.

Step 3. Insert the locking screw into the "Lock Screw" position to lock the tuner (see Figure A 2).

Table 3. Travel Range

Model	Carriage Travel Range (steps)	Probe Travel Range (steps)
NT-8G-65G-1C	0 to 25,000,000	0 to 2,600,000
NT-8G-65G-1C-C	0 to 25,000,000	0 to 2,600,000



Figure A 1. Packing Kit

Locking Screw



Figure A 2. Locking Screw Location



Data Sheet Resources

VNA Calibration Kits

<https://maurymw.com/product-category/precision-calibration/vna-calibration-and-verification/calibration-kit/>

Connector Gage Kits

<https://maurymw.com/product-category/interconnect/tool/gage-kit/>

Torque Wrench

<https://maurymw.com/product-category/interconnect/tool/torque-wrench/>



CONTACTS

Corporate

Maury Microwave
2900 Inland Empire Boulevard
Ontario, California 91764-4804
United States of America

Tel 909-987-4715
Fax 909-987-5855
eMail maury@maurymw.com

Sales

Tel 909-204-3224
Fax 909-987-1112
eMail maury@maurymw.com

Customer Support

Tel 909-204-3283
Fax 909-987-1112
eMail support@maurymw.com

Web Site <http://maurymw.com>

Web Resources

Visit our web site for additional product information and literature.

Maury Applications Notes Library & Technical Articles Archive
<http://maurymw.com/Support/tech-support.php>

Maury Sales Representative Finder
<http://maurymw.com/Support/find-sales-rep.php>