

WAYS TO
CONTROL
TUNER



Telnet

Direct ASCII commands can be sent through raw TCP/IP interface over Ethernet or USB and used with any socket programming language or through any Telnet client program in any operating system.

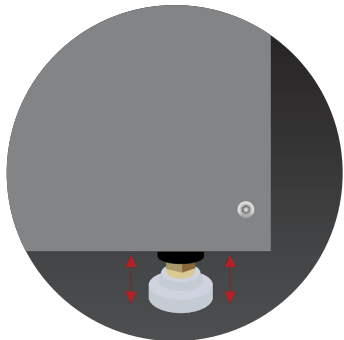


MTUNE or ATS or IVCAD

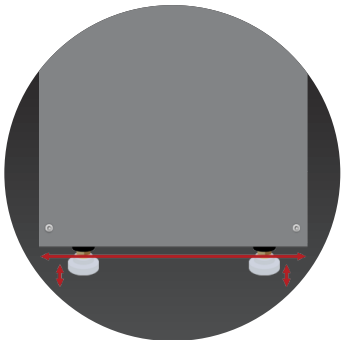
Use Maury Microwave Software MTUNE or ATS or IVCAD to easily characterize and control your Tuner. All Software packages support all Maury Microwave tuner libraries.

Tuner Quick
Start Guide

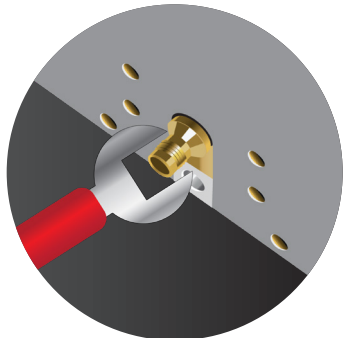
TIPS



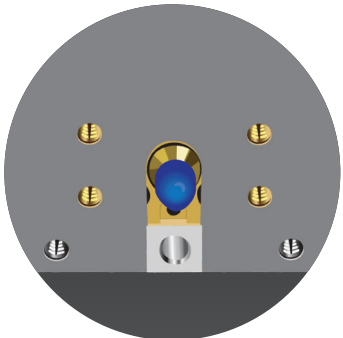
Adjust tuner supports to provide alignment with mating devices



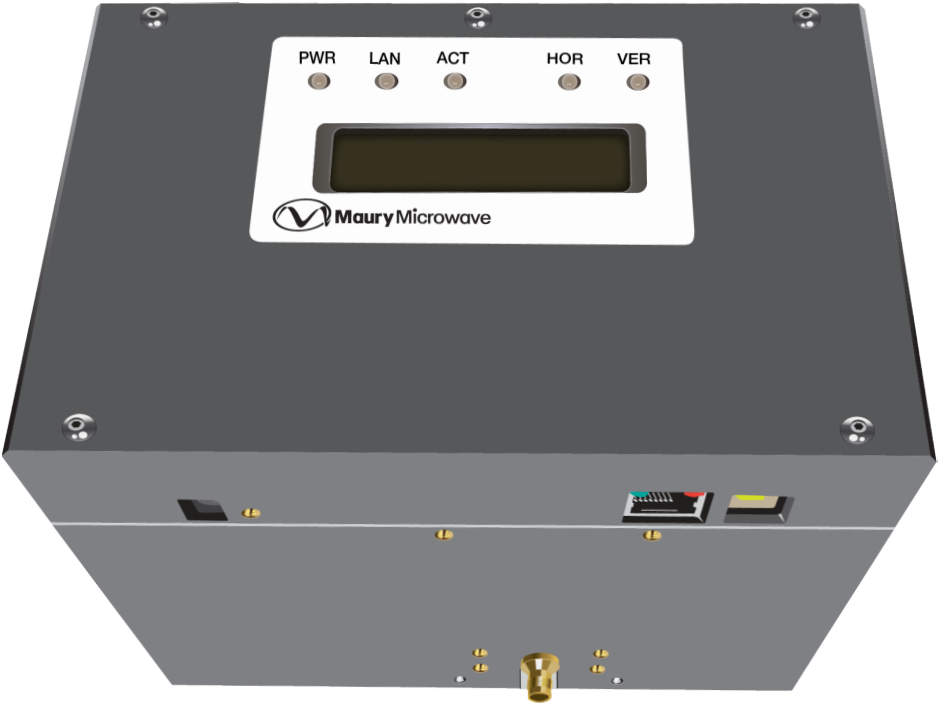
Tuner should be parallel to surface during operation



Use torque wrenches when tightening connectors



Use connector caps when tuner is not in use or during transport



For more and detailed information about the 2.4mm and 1.85mm tuners, please review datasheet 4T-050G04A and manual MT984-471.

CONTACT US:
W / maurymw.com E / maury@maurymw.com
P / +1-909-987-4715 F / +1-909-987-1112
2900 Inland Empire Blvd, Ontario, CA 91764



1D-005 — FEBRUARY 2025

Sec.1

XT TUNER HANDLING

Unpacking tuner and what's inside box

- › Tuner
- › Power supply
- › USB cable
- › Ethernet cable
- › USB to Ethernet adapter
- › Manuals
- › Foot and Bracket Kit



All items listed previously will be packed in the same box.

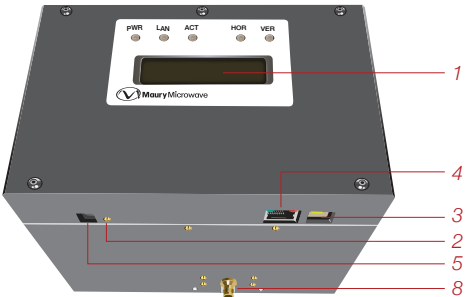
Do not throw away the packaging, you will need it later to transport the tuner



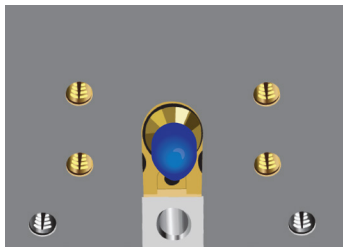
Once you open box, you will find the tuner and accessories as shown.

Getting to know the tuner

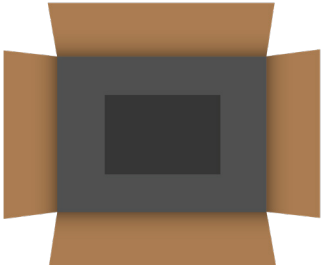
1. LCD/Main Display
2. Reset button
3. USB port
4. Ethernet port
5. Power supply port
6. Connector caps (install when tuner is not in use or during shipping)
7. DUT Port Label
8. Tuner Connector



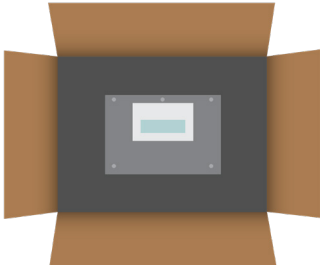
Repacking your tuner for shipping/transport



Place connector caps back Note: Refer to manual for moving carriage and probe to shipping position (carriage and probe should be positioned half way between lower and upper limits).



Place foam inserts back as shown in image.



Make sure all items have been placed back into box.

Sec.2

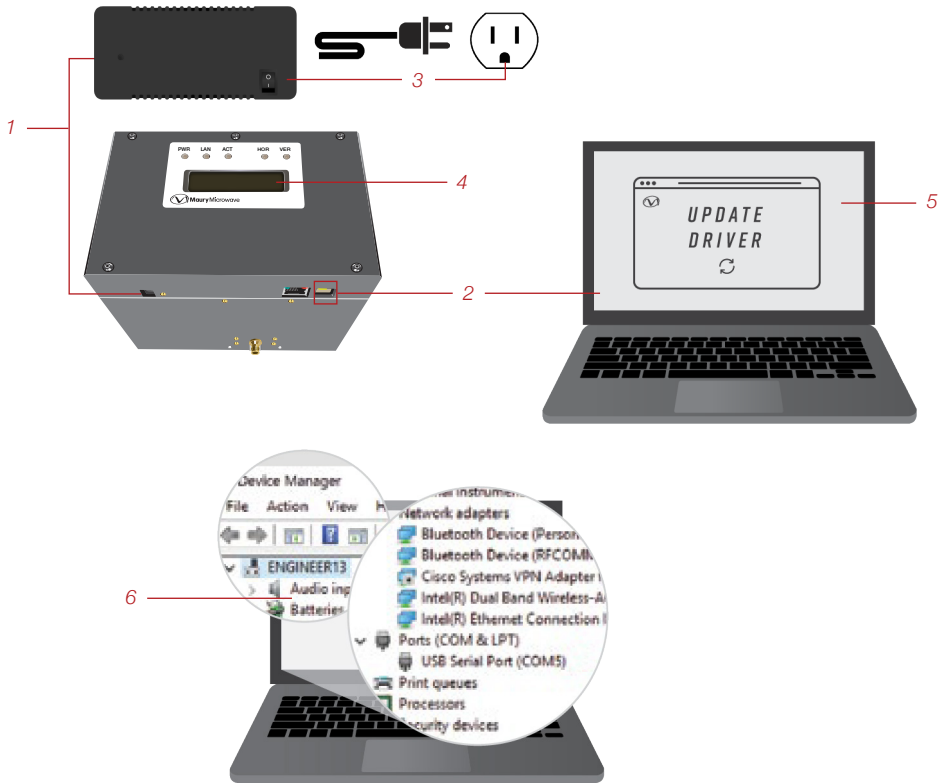
SETTING UP YOUR TUNER FOR FIRST USE

USB Setup

Note: Only use USB or Ethernet, but not both at same time.

1. Plug in power supply to tuner first (only use power supply that was supplied with tuner, failure to do so may result in damage and void warranty)
2. Connect USB cable between tuner and computer
3. Turn ON power supply (If power supply does not have a switch, connect it to wall outlet)
4. Tuner will boot up at this time
5. Pop-up window to update USB driver if first time
6. Identify USB port number in Widows

Note: Please refer to MT984-471 user manual for more information.



Ethernet Setup

Note: Only use USB or Ethernet, but not both at same time.

1. Plug in power supply to controller first (only use power supply that was supplied with tuner, failure to do so may result in damage and void warranty)
2. Connect Ethernet cable between tuner and computer
3. Turn ON power supply (if power supply does not have a switch, insert to wall outlet) Tuner will boot up at this time
4. Tuner will boot up at this time
5. Configure Ethernet card and IP address on computer

Note: Please refer to MT984-471 user manual for more information.

