

WAYS TO
CONTROL
TUNER



Telnet

Direct ASCII commands can be sent through raw TCP/IP interface over Ethernet or USB and used with any socket programming language or through any Telnet client program in any operating system.



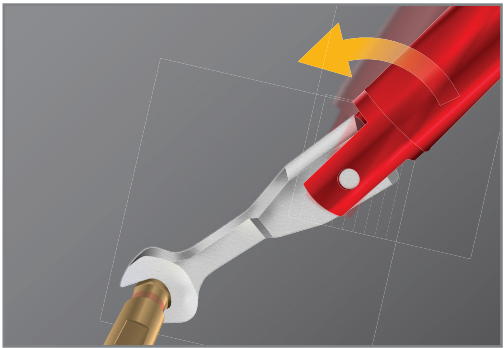
MTUNE or ATS or IVCAD

Use Maury Microwave Software ATS or IVCAD to MTUNE or ATS or IVCAD to easily characterize and control your Tuner. All Software packages support all Maury Microwave tuner libraries.

Nano5G
Quick Start
Guide



TIPS



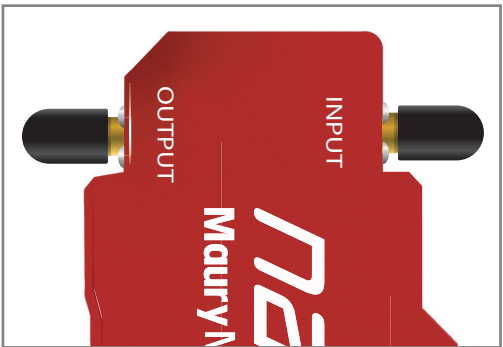
Use torque wrenches when tightening connectors (Torque: 1.85mm / 8 lb-in)



Always lock turner during shipping/transport



Lock screw/plug storage location (Underneath Tuner)



Use connector caps when tuner not in use



For more and detailed information about the Nano5G tuners, please review data sheets and manual. (4T-050G10, XT902-019)

CONTACT US:
W / maurymw.com E / maury@maurymw.com
P / +1-909-987-4715 F / +1-909-987-1112
2900 Inland Empire Blvd, Ontario, CA 91764



1D-003 - DECEMBER 2024

Maury Microwave

Sec.1

XT TUNER HANDLING

Unpacking tuner and what's inside box

- › Tuner
- › Power supply
- › USB cable
- › Ethernet cable
- › USB to Ethernet adapter
- › Lemo Cable
- › Controller
- › Manuals



All items listed previously will be packed in the same box.

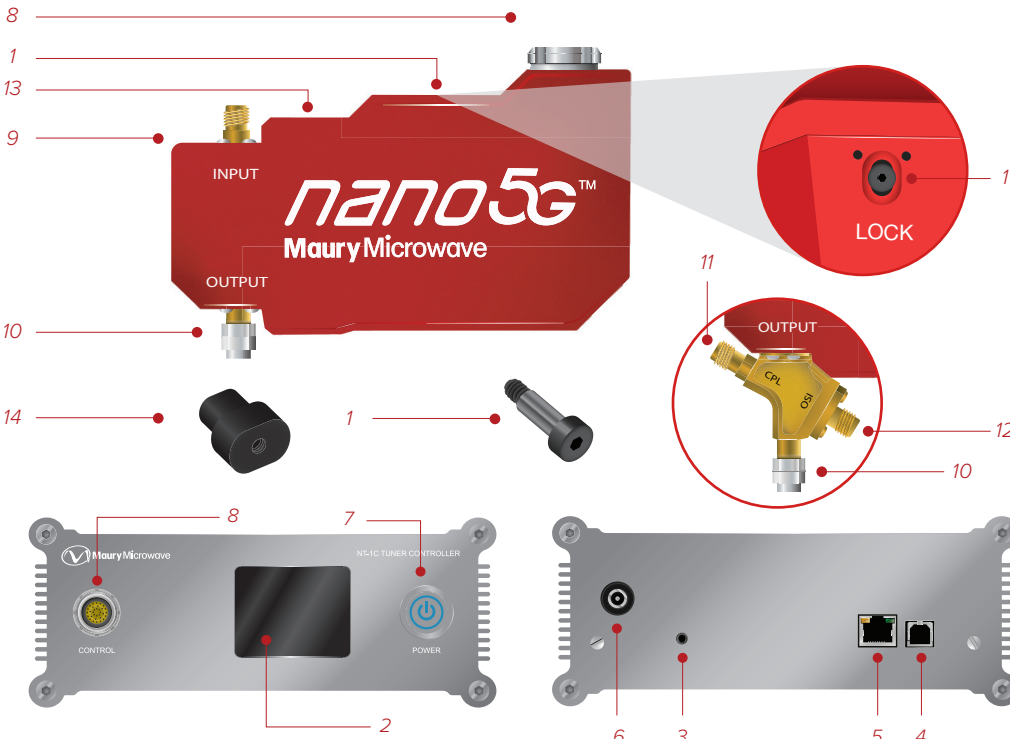
Do not throw away the packaging, you will need it later to transport the tuner

Once you open case, you will find the tuner, controller & other components packaged into tightly fitted pockets which protect them while they are transported.

USB cable, Ethernet cable & USB-to-Ethernet adapter are located underneath the controller. Before using tuner, remove lock screw & store in storage location underneath tuner.

Getting to know the tuner

1. Lock screw/plug (Tuner)
2. LCD/Main Display (Controller)
3. Reset button (Controller)
4. USB port (Controller)
5. Ethernet port (Controller)
6. Power supply port (Controller)
7. 12V Power on/off (Controller)
8. Tuner / Controller cable interface
9. Tuner connector (Female 1.85mm)
10. Tuner connector (Male 1.85mm)
11. Coupler connector (CPL) (Female)
12. Coupler connector (ISO) (Female)
13. Lock screw/plug storage location (Underneath Tuner)
14. Plug (Tuner)



Note: During normal tuner operation, install plug on lock area to prevent debris from getting inside of tuner.

Repacking your tuner for shipping/transport

Place connector caps back and make sure lock/unlock screw is in the correct location as shown in image. (Refer to Tips section)

Note: To move tuner to locking position, use Telnet and type the command "PARK" then press enter. Once tuner has moved to park position, remove the locking screw from its storage location & install as shown (Use lock screw to pull plug).



Place foam inserts back as shown in image.



Make sure all items have been placed back into corresponding pockets in case.

WARNING: Tuner must be **OFF** before installing/removing the locking screw, otherwise the tuner will emit a high pitch noise trying to maintain the current actuator position.

Sec.2

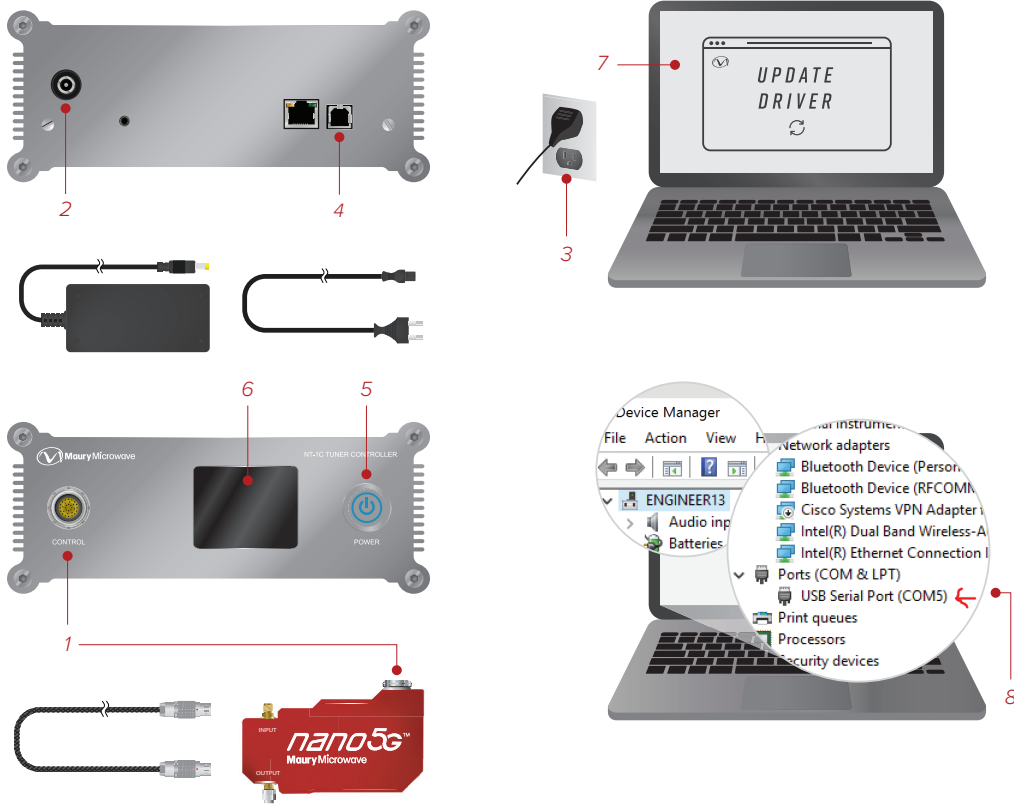
SETTING UP YOUR TUNER FOR FIRST USE

USB Setup

Note: Only use USB or Ethernet, but not both at same time.

1. Connect Lemo cable between turner and controller.
2. Plug in power supply to controller first (only use power supply that was supplied with tuner, failure to do so may result in damage and void warranty)
3. Plug in power supply to wall
4. Connect USB cable between tuner and computer
5. Turn ON controller
6. Controller will boot up at this time
7. Pop-up window to update USB driver if first time
8. Identify USB port number in Windows

Note: Please refer to Nano5G Tuner user manual for more information.



Ethernet Setup

Note: Only use USB or Ethernet, but not both at same time.

1. Connet Lemo cable between turner and controller.
2. Plug in power supply to controller first (only use power supply that was supplied with tuner, failure to do so may result in damage and void warranty)
3. Plug in power supply to wall
4. Connect Ethernet cable between tuner and computer
5. Turn ON controller
6. Controller will boot up at this time
7. Configure Ethernet card and IP address on computer

Note: Please refer to Nano5G Tuner user manual for more information.

