

WAYS TO  
CONTROL  
TUNER



Telnet

Direct ASCII commands can be sent through raw TCP/IP interface over Ethernet or USB and used with any socket programming language or through any Telnet client program in any operating system.



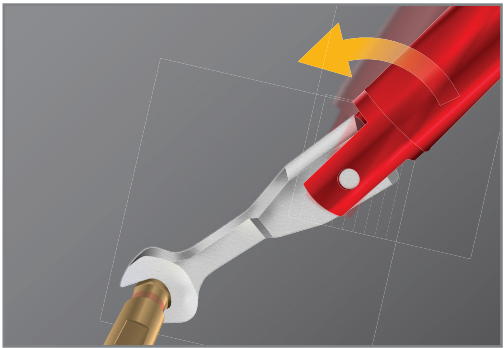
MTUNE or ATS or IVCAD

Use Maury Microwave Software ATS or IVCAD to MTUNE or ATS or IVCAD to easily characterize and control your Tuner. All Software packages support all Maury Microwave tuner libraries.

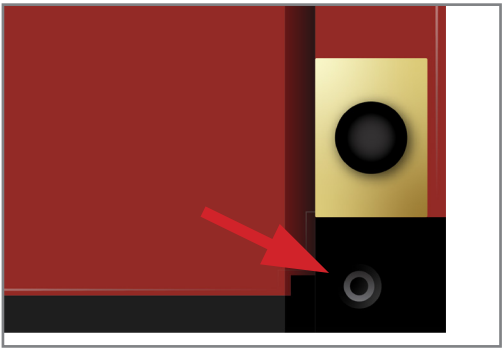
Nano5G  
Quick Start  
Guide



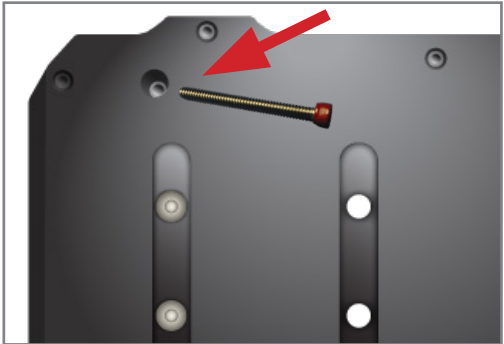
T  
I  
P  
S



Use torque wrenches when tightening connectors  
(Torque: 1.85mm / 8 lb-in)



Lock screw/plug storage location (underneath  
input connector)



Always lock turner during shipping/transport  
(underneath tuner)



Use connector caps when tuner not in use



For more and detailed information about the Nano Series tuners, please review data sheets and manual.  
(4T-050G10 / XT902-019 / XT985-205)

**CONTACT US:**  
W / [maurymw.com](http://maurymw.com) E / [maury@maurymw.com](mailto:maury@maurymw.com)  
P / +1-909-987-4715 F / +1-909-987-1112  
2900 Inland Empire Blvd, Ontario, CA 91764



# Sec 1

## XT TUNER HANDLING

### Unpacking tuner and what's inside box

- > Tuner
- > Power supply
- > USB cable
- > Ethernet cable
- > USB to Ethernet adapter
- > Lemo Cable
- > Controller
- > Manuals



All items listed previously will be packed in the same box.

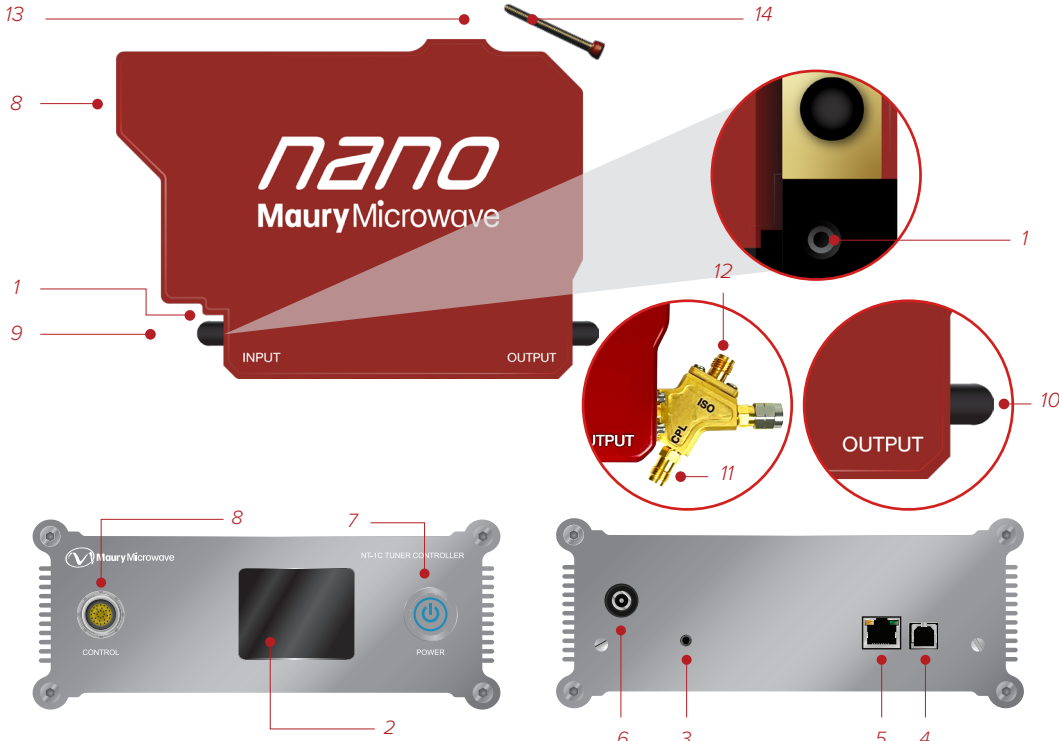
Do not throw away the packaging, you will need it later to transport the tuner

Once you open box, you will find the tuner, controller & other components packaged into tightly fitted pockets which protect them while they are transported.

USB cable, Ethernet cable & USB-to-Ethernet adapter are located underneath the controller. Before using tuner, remove lock screw & store in storage location underneath tuner.

### Getting to know the tuner

1. Lock screw storage location (Tuner)
2. LCD/Main Display (Controller)
3. Reset button (Controller)
4. USB port (Controller)
5. Ethernet port (Controller)
6. Power supply port (Controller)
7. 12V Power on/off (Controller)
8. Tuner / Controller cable interface
9. Tuner connector (Female 1.85mm)
10. Tuner connector (Male 1.85mm)
11. Coupler connector (CPL) (Female)
12. Coupler connector (ISO) (Female)
13. Lock Screw shipping location (Tuner) (Underneath Tuner)
14. Lock screw



### Repacking your tuner for shipping/transport

Place connector caps back and make sure lock/unlock screw is in the correct location as shown in image. (Refer to Tips section)

Note: To move tuner to locking position, use Telnet and type the command "PARK" then press enter. Once tuner has moved to park position, remove the locking screw from its storage location & install as shown.



Place foam inserts back as shown in image.



Make sure all items have been placed back into corresponding pockets in box.

**WARNING:** Tuner must be **OFF** before installing/removing the locking screw, otherwise the tuner will emit a high pitch noise trying to maintain the current actuator position.

# Sec 2

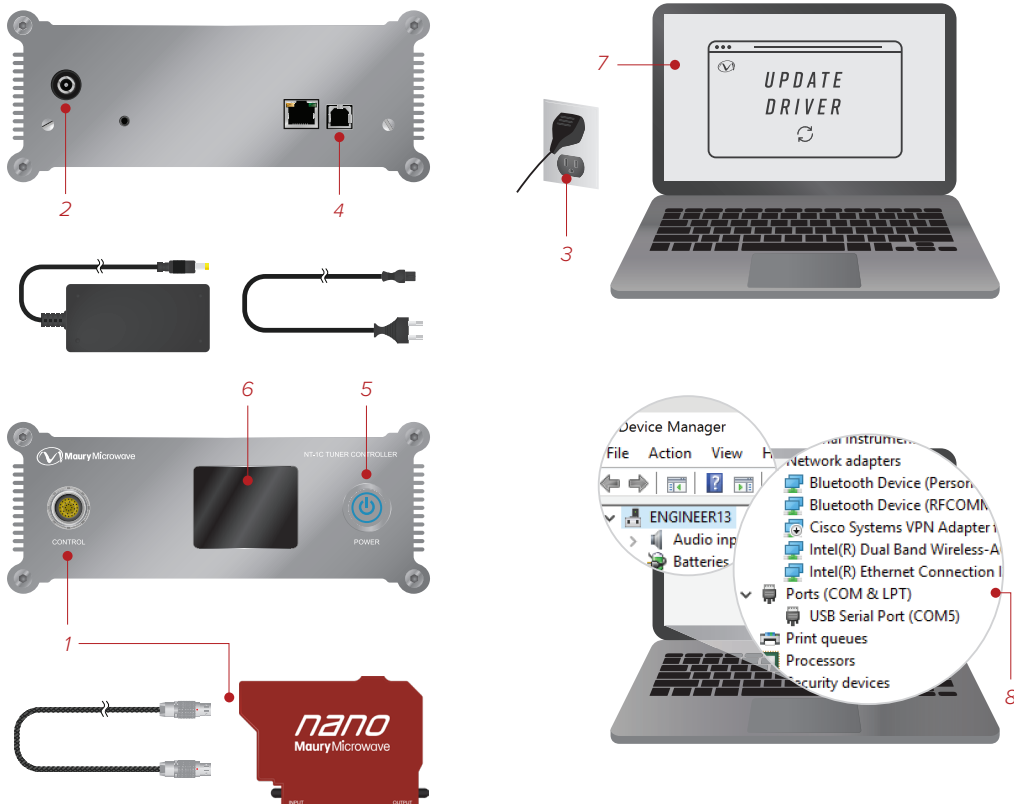
## SETTING UP YOUR TUNER FOR FIRST USE

### USB Setup

Note: Only use USB or Ethernet, but not both at same time.

1. Connect Lemo cable between turner and controller.
2. Plug in power supply to controller first (only use power supply that was supplied with tuner, failure to do so may result in damage and void warranty)
3. Plug in power supply to wall
4. Connect USB cable between tuner and computer
5. Turn ON controller
6. Controller will boot up at this time
7. Pop-up window to update USB driver if first time
8. Identify USB port number in Windows

Note: Please refer to user manual for more information.



### Ethernet Setup

Note: Only use USB or Ethernet, but not both at same time.

1. Connect Lemo cable between turner and controller.
2. Plug in power supply to controller first (only use power supply that was supplied with tuner, failure to do so may result in damage and void warranty)
3. Plug in power supply to wall
4. Connect Ethernet cable between tuner and computer
5. Turn ON controller
6. Controller will boot up at this time
7. Configure Ethernet card and IP address on computer

Note: Please refer to user manual for more information.

