

WAYS TO  
CONTROL  
TUNER



Telnet

Direct ASCII commands can be sent through raw TCP/IP interface over Ethernet or USB and used with any socket programming language or through any Telnet client program in any operating system.

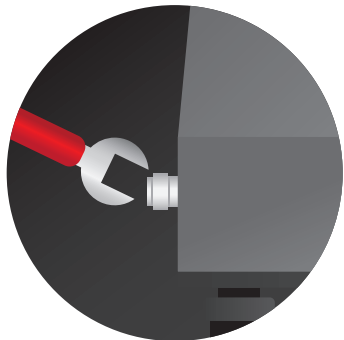


MTUNE or ATS or IVCAD

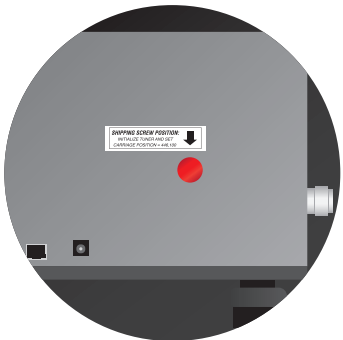
Use Maury Microwave Software MTUNE or ATS or IVCAD to easily characterize and control your Tuner. All Software packages support all Maury Microwave tuner libraries.

# XT Multi-Harmonic Tuner Quick Start Guide

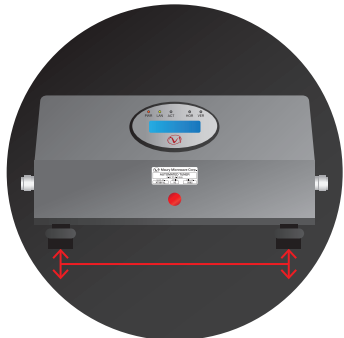
## TIPS



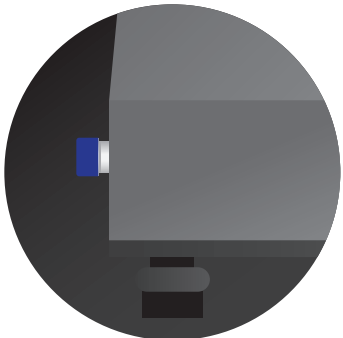
Use torque wrenches when tightening connectors  
Torque: 7mm / 12 lb-in — 3.5mm / 8 lb-in



Always use locking screw during shipping/transport  
Depending on tuner model, harmonic tuners will have two or three locking screws



Tuner should be parallel to surface during operation



Use connector caps when tuner not in use



For more and detailed information about the XT tuners, please review data sheet 4T-050G09, XT981-571 manual.

**CONTACT US:**  
W / maurymw.com E / maury@maurymw.com  
P / +1-909-987-4715 F / +1-909-987-1112  
2900 Inland Empire Blvd, Ontario, CA 91764



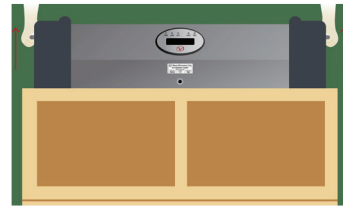
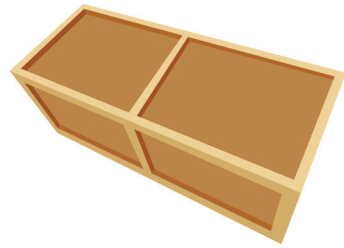
1D-006 — DECEMBER 2024

# Sec.1

## XT TUNER HANDLING

### Unpacking tuner and what's inside box

- › Tuner
- › Power supply
- › USB cable
- › Ethernet cable
- › USB to Ethernet adapter
- › Manuals



All items listed previously will be packed in the same crate/cardboard box.

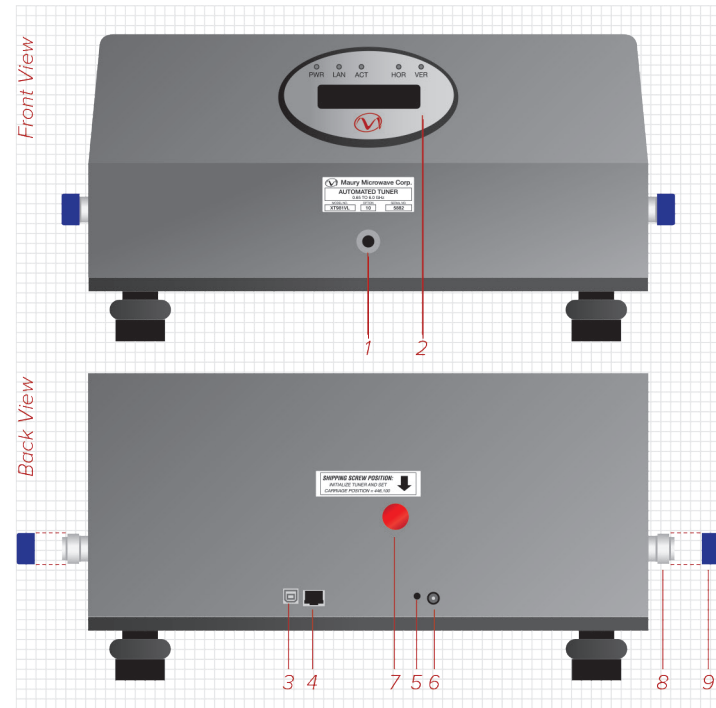
Do not throw away the crate/cardboard box, you will need it later to transport the tuner.

Once you open the crate/ cardboard box, you will find the tuner packaged between 2 foam inserts which protect it while it's transported. In addition, the crate contains foam on each side of the tuner in order to protect it.

In order to remove tuner from crate/ cardboard box grab the handles on each side and pull upwards. Note: 2 people are required to safely unpack the tuner from the crate.

### Getting to know the tuner

1. Locking screw location during normal use (storage) (qty 2 or 3 depending on tuner model)
2. LCD/Main Display
3. USB port
4. Ethernet port
5. Reset button
6. Power supply port
7. Locking screw location during shipping/transport (qty 2 or 3 depending on tuner model)
8. Connector
9. Connector caps (install when tuner is not in use or during shipping)



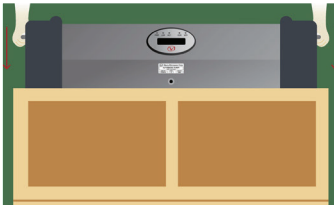
### Repacking your tuner for shipping/transport



Place connector caps back and make sure locking screws are in the correct location as shown in image. Note: Refer to manual for moving carriage to locking position (probes should be positioned half way between lower and upper limits).



Place foam inserts back as shown in image.



Grab tuner from side handles and place back into the crate/ cardboard box. Note: 2 people are required to safely pack the tuner into the crate.



Make sure all items have been placed back into the crate/ cardboard box. It is very important for the safety of the tuner to place back all foam pieces to provide padding.

# Sec.2

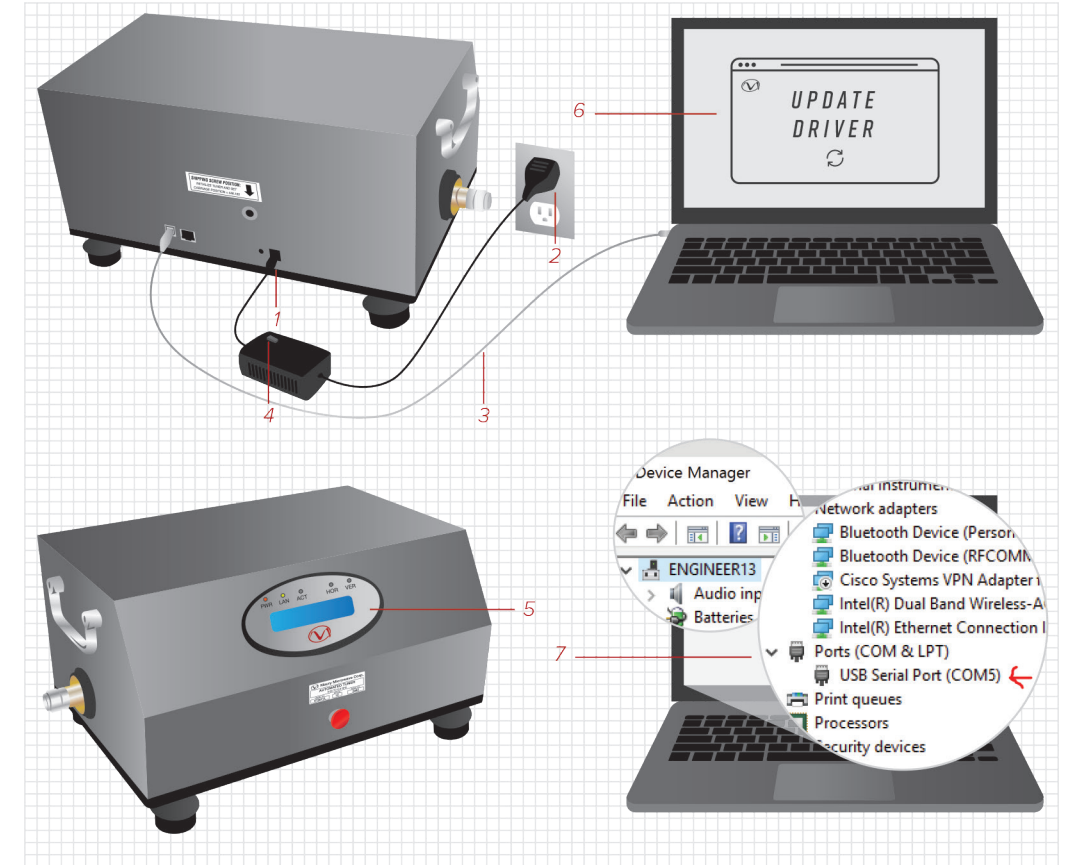
## SETTING UP YOUR TUNER FOR FIRST USE

### USB Setup

Note: Only use USB or Ethernet, but not both at same time.

1. Plug in power supply to tuner first (only use power supply that was supplied with tuner, failure to do so may result in damage and void warranty)
2. Plug in power supply to wall
3. Connect USB cable between tuner and computer
4. Turn ON power supply (if power supply has switch)
5. Tuner will boot up at this time
6. Pop-up window to update USB driver if first time
7. Identify USB port number in Windows

Note: Please refer to XT Tuner user manual for more information.



### Ethernet Setup

Note: Only use USB or Ethernet, but not both at same time.

1. Plug in power supply to tuner first (only use power supply that was supplied with tuner, failure to do so may result in damage and void warranty)
2. Plug in power supply to wall
3. Connect Ethernet cable between tuner and computer
4. Turn ON power supply (if power supply has switch)
5. Tuner will boot up at this time
6. Configure Ethernet card and IP address on computer

Note: Please refer to XT Tuner user manual for more information.

