

WAYS TO
CONTROL
TUNER



Telnet

Direct ASCII commands can be sent through raw TCP/IP interface over Ethernet or USB and used with any socket programming language or through any Telnet client program in any operating system.

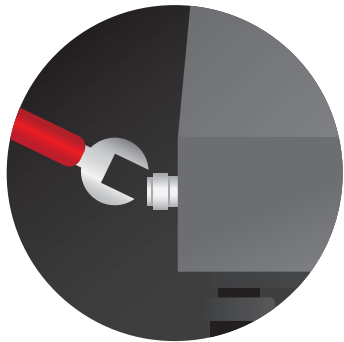


MTUNE or ATS or IVCAD

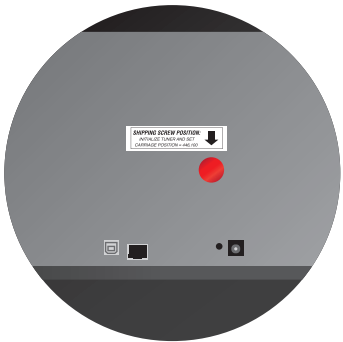
Use Maury Microwave Software MTUNE or ATS or IVCAD to easily characterize and control your Tuner. All Software packages support all Maury Microwave tuner libraries.

XT Tuner
Quick Start
Guide

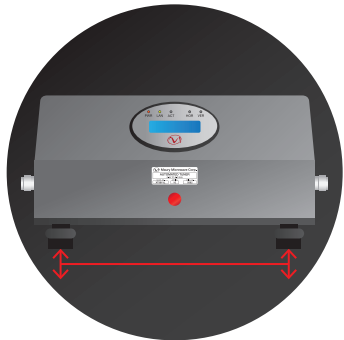
TIPS



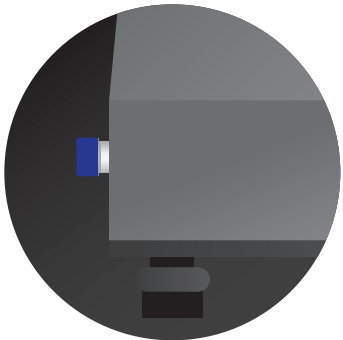
Use torque wrenches when tightening connectors
Torque: 7mm / 12 lb-in — 3.5mm / 8 lb-in



Always use locking screw during shipping/transport



Tuner should be parallel to surface during operation



Use connector caps when tuner not in use



For more and detailed information about the XT tuners, please review data sheets 4T-050G06, 4T-050G07, 4T-050G08 and manual.

CONTACT US:
W / maurymw.com E / maury@maurymw.com
P / +1-909-987-4715 F / +1-909-987-1112
2900 Inland Empire Blvd, Ontario, CA 91764



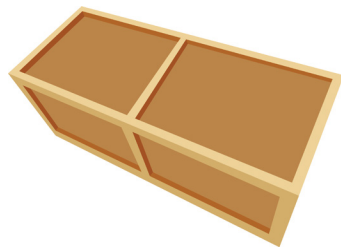
1D-002 — OCTOBER 2024

Sec.1

XT TUNER HANDLING

Unpacking tuner and what's inside crate

- › Tuner
- › Power supply
- › USB cable
- › Ethernet cable
- › USB to Ethernet adapter
- › Manuals



All items listed previously will be packed in the same crate.

Do not throw away the crate, you will need it later to transport the tuner



Once you open the crate, you will find the tuner packaged between 2 foam inserts which protect it while it's transported. In addition, the crate contains foam on each side of the tuner in order to protect it.

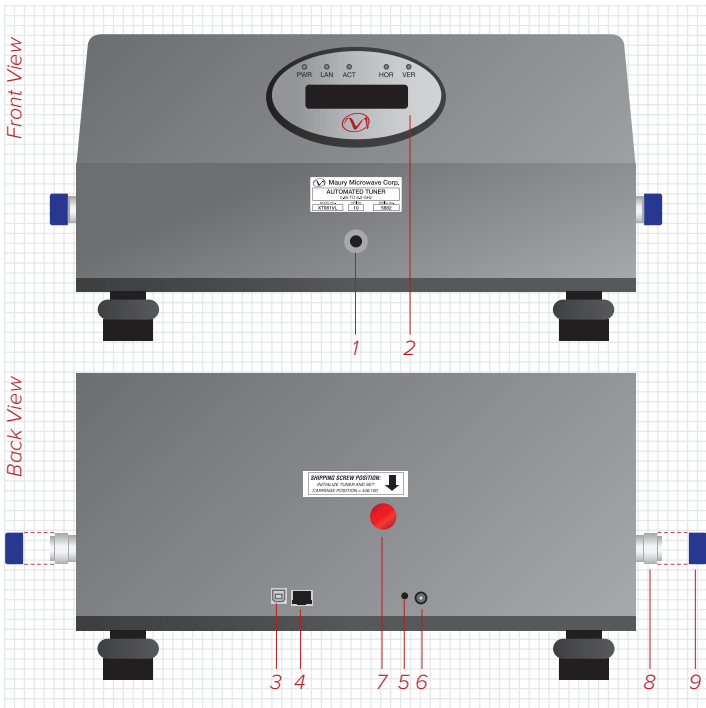


In order to remove tuner from crate, grab the handles on each side and pull upwards.

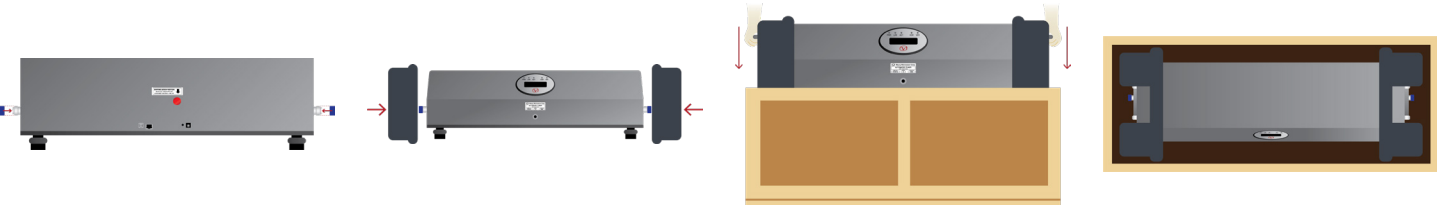
Note: 2 people are required to safely unpack the tuner.

Getting to know the tuner

1. Locking screw location during normal use (storage)
2. LCD/Main Display
3. USB port
4. Ethernet port
5. Reset button
6. Power supply port
7. Locking screw location during shipping/transport
8. Connector
9. Connector caps (install when tuner is not in use or during shipping)



Repacking your tuner for shipping/transport



Place connector caps back and make sure locking screw is in the correct location as shown in image. Note: Refer to manual for moving carriage to locking position (probes should be positioned half way between lower and upper limits).

Place foam inserts back as shown in image.

Grab tuner from side handles and place back into the crate.

Note: 2 people are required to safely pack the tuner.

Make sure all items have been placed back into the crate.

It is very important for the safety of the tuner to place back all foam pieces to provide padding.

Sec.2

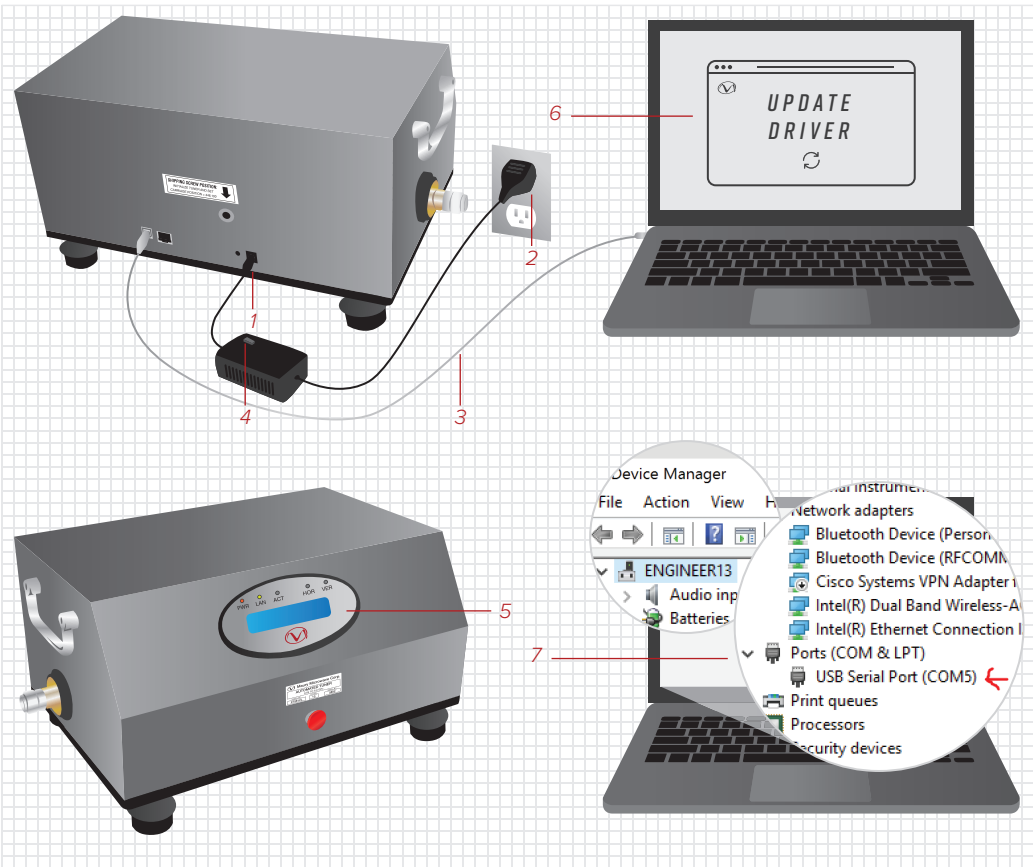
SETTING UP YOUR TUNER FOR FIRST USE

USB Setup

Note: Only use USB or Ethernet, but not both at same time.

1. Plug in power supply to tuner first (only use power supply that was supplied with tuner, failure to do so may result in damage and void warranty)
2. Plug in power supply to wall
3. Connect USB cable between tuner and computer
4. Turn ON power supply
5. Tuner will boot up at this time
6. Pop-up window to update USB driver if first time
7. Identify USB port number in Windows

Note: Please refer to XT Tuner user manual for more information.



Ethernet Setup

Note: Only use USB or Ethernet, but not both at same time.

1. Plug in power supply to tuner first (only use power supply that was supplied with tuner, failure to do so may result in damage and void warranty)
2. Plug in power supply to wall
3. Connect Ethernet cable between tuner and computer
4. Turn ON power supply
5. Tuner will boot up at this time
6. Configure Ethernet card and IP address on computer

Note: Please refer to XT Tuner user manual for more information.

